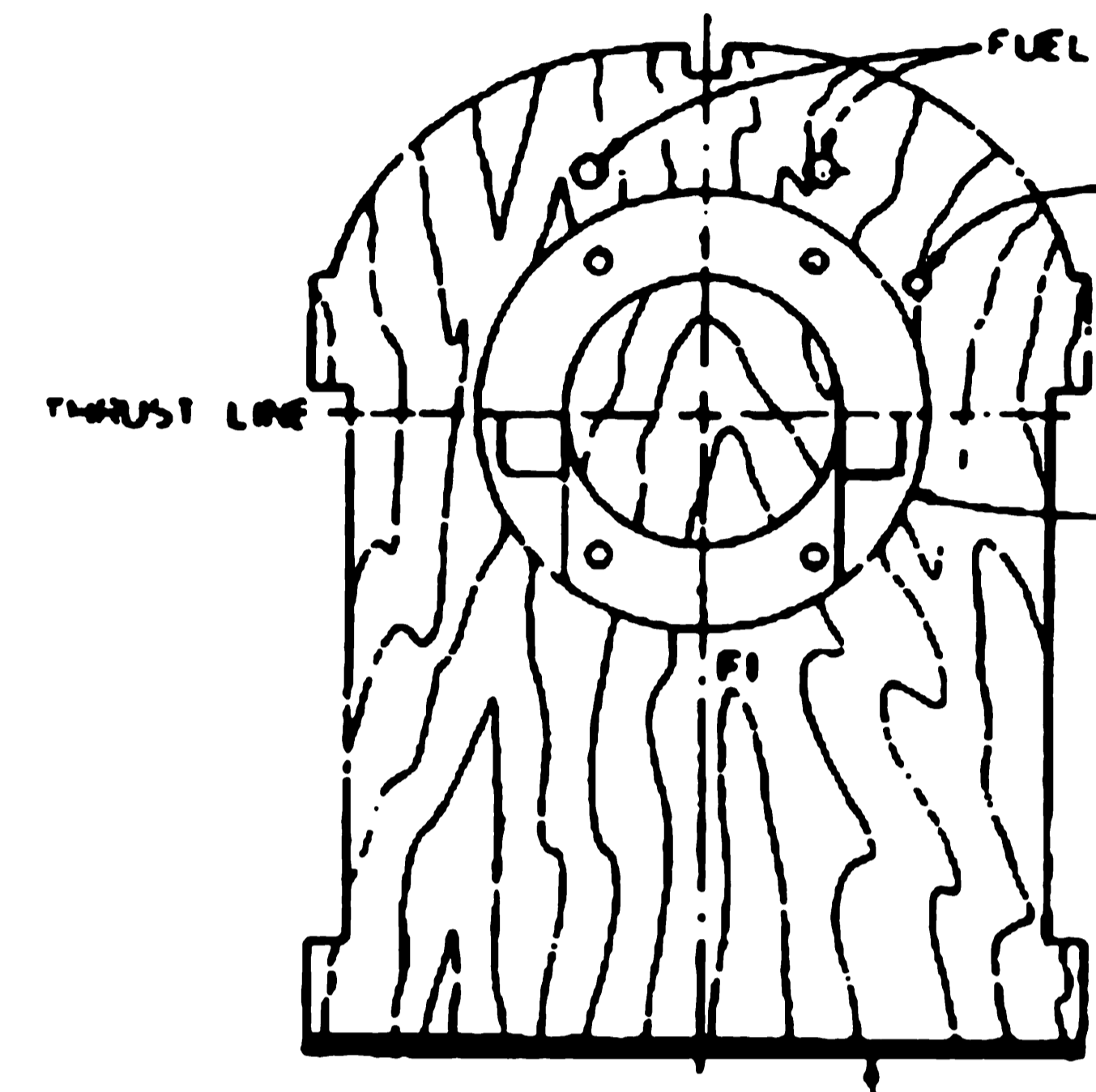
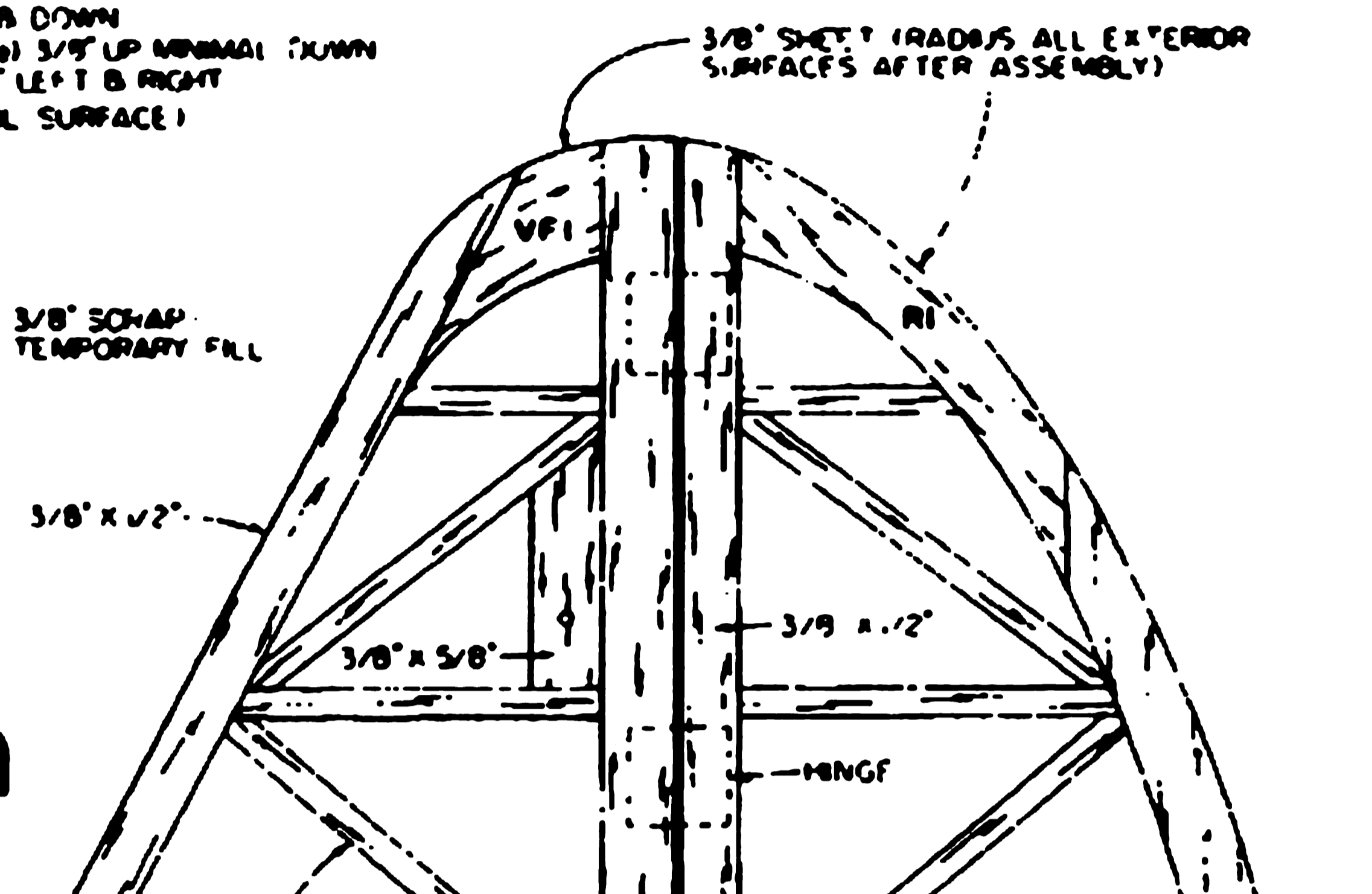
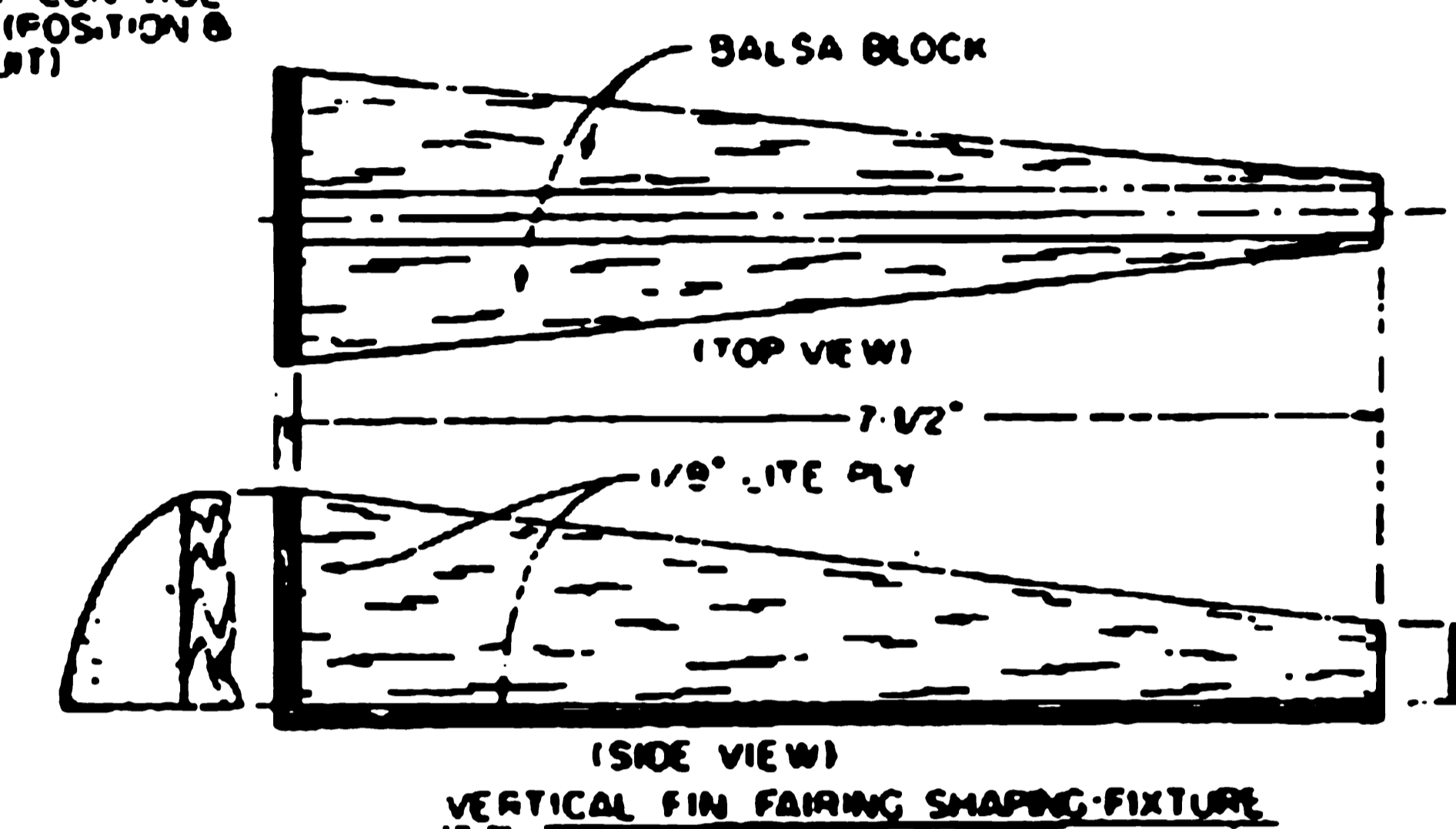
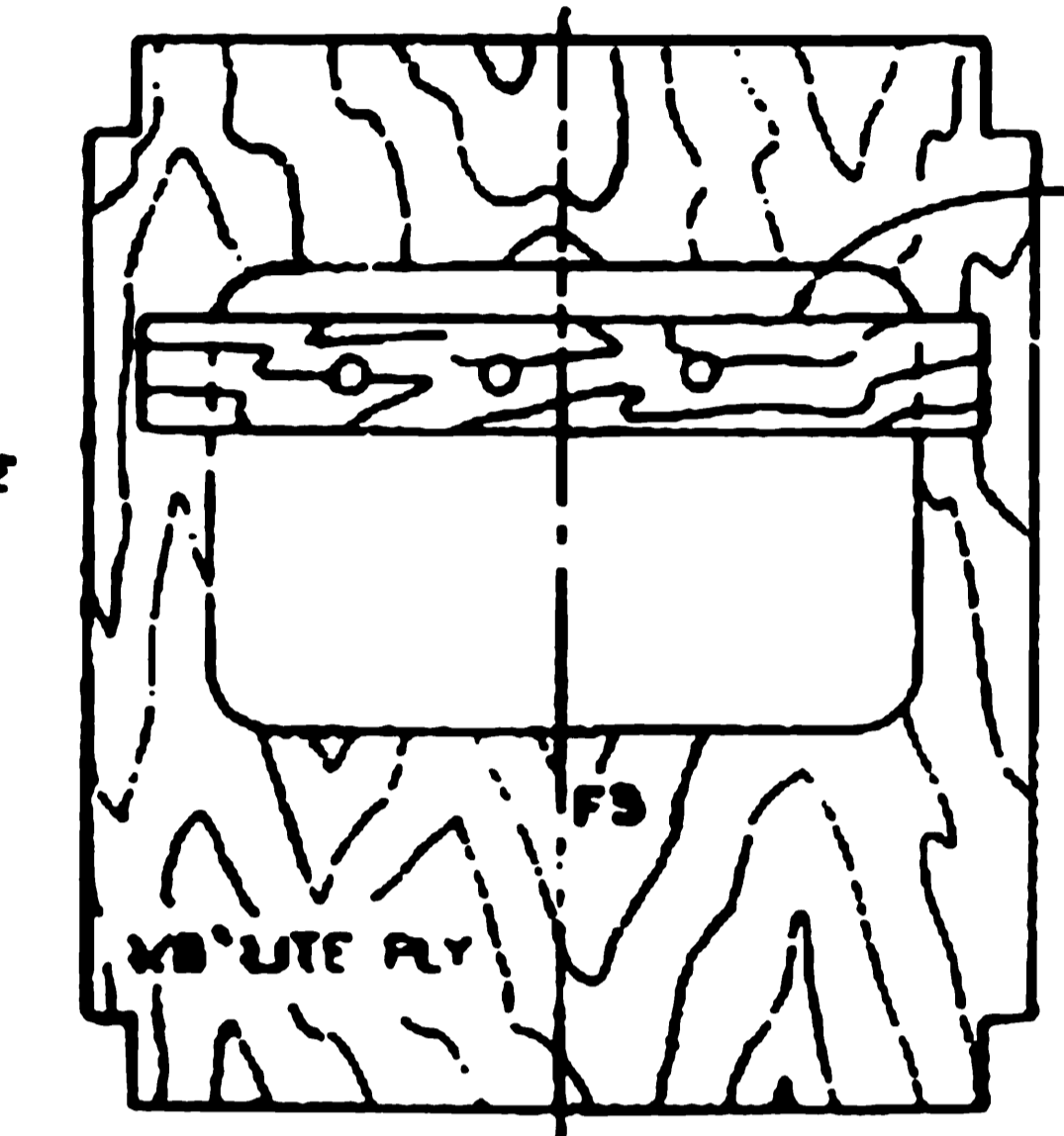
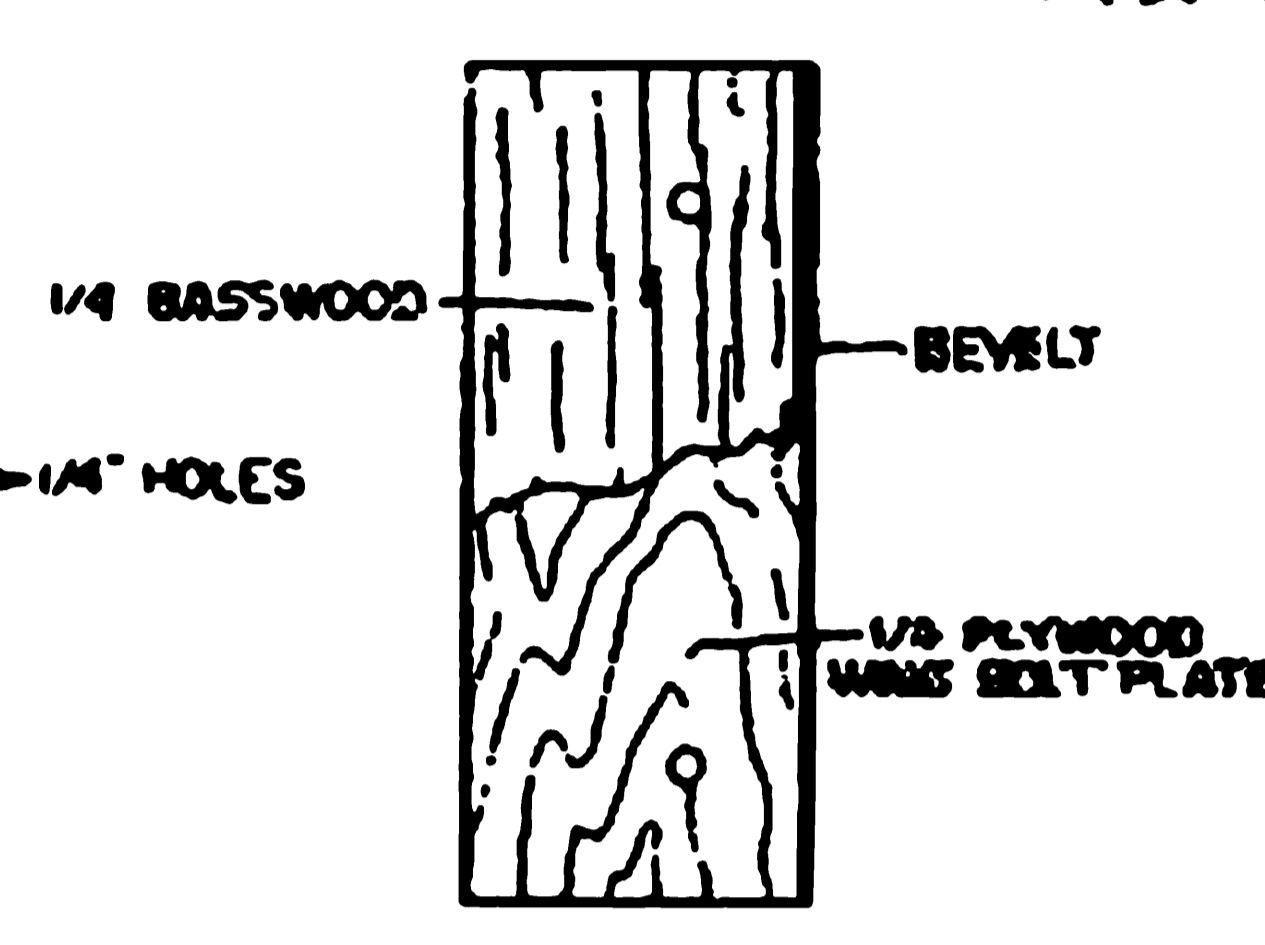
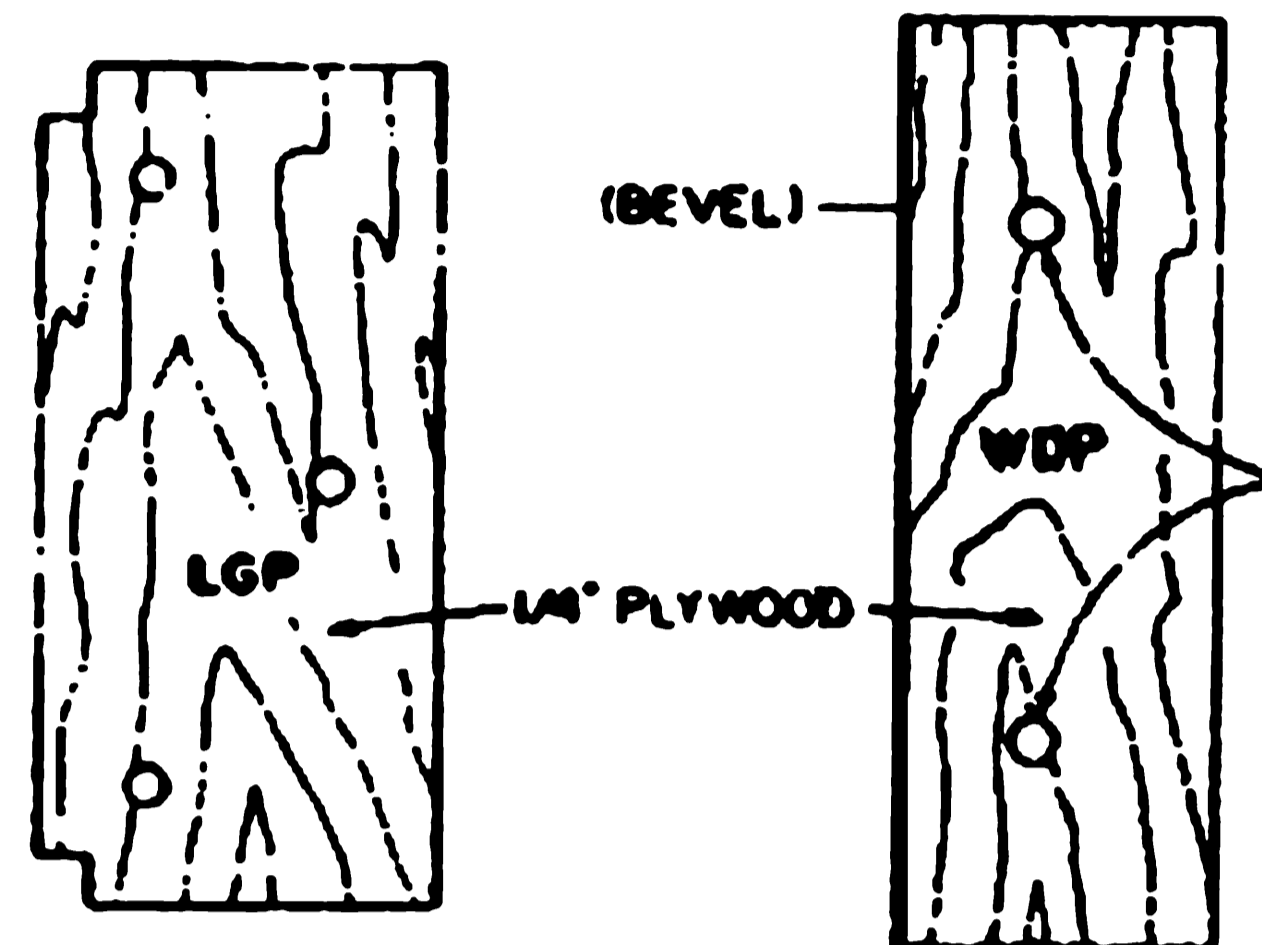
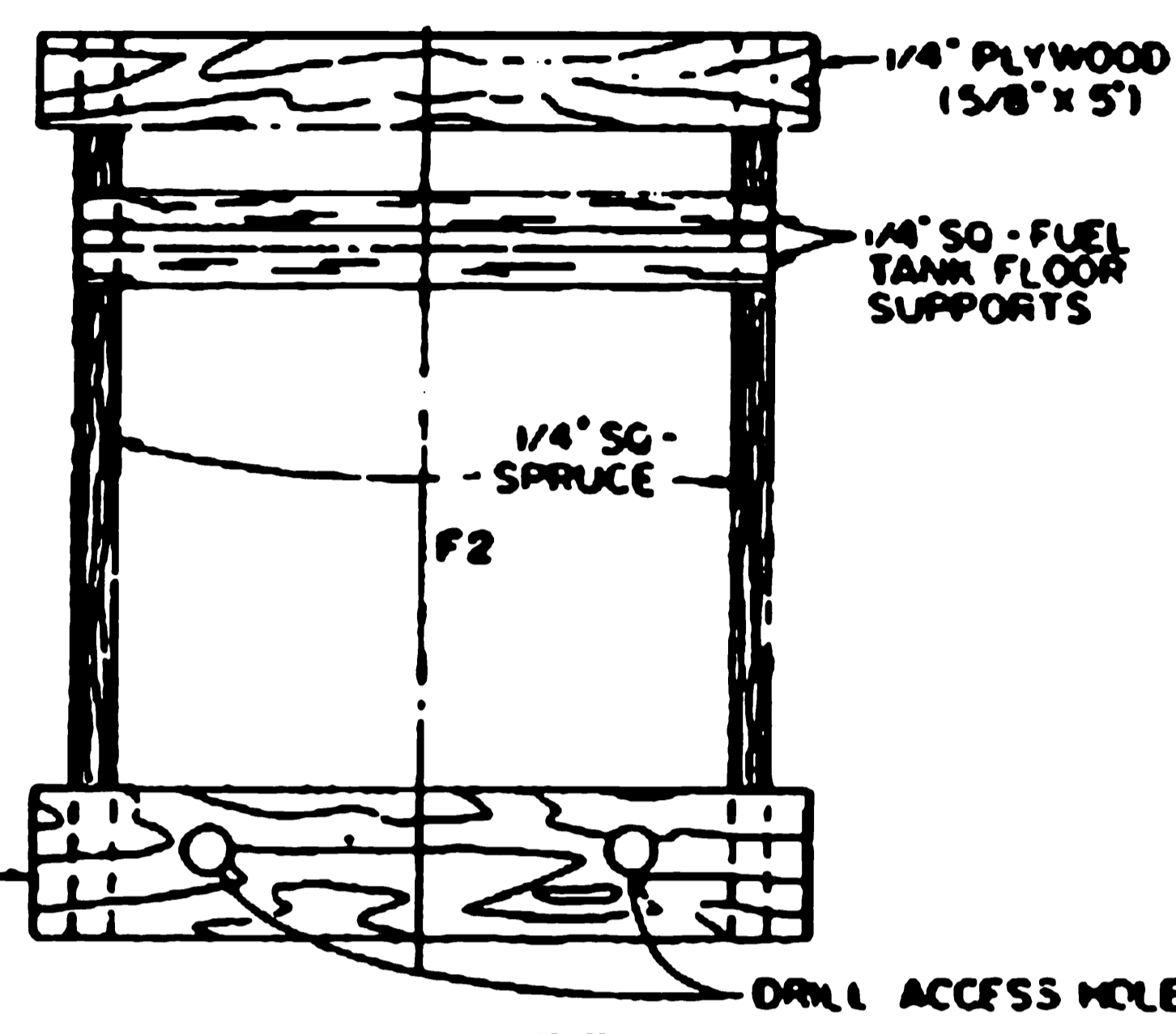


OPEN TOP COUPLING AS REQUIRED TO ACCOMMODATE ENGINE MUFFLER & NEEDLE VALVE PERFORMANCE INTERIOR WITH 2 OZ FIBERGLASS CLOTH & EPOXY

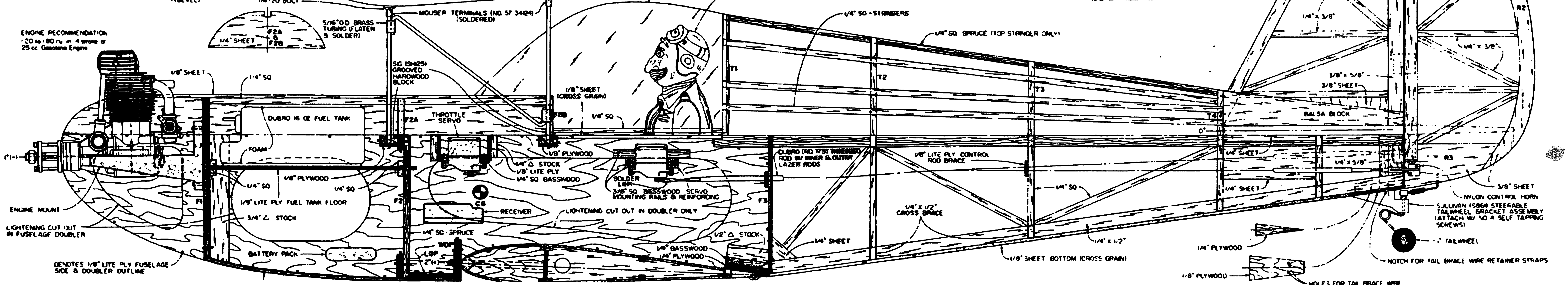
CONTROL SURFACE TRAVEL LIMITS
 ELEVATOR (High Rate) 2" UP & DOWN, (Low Rate) 1" UP & DOWN
 ALL CROSS (High Rate) 3/4" UP MINIMAL DOWN, (Low Rate) 3/8" UP MINIMAL DOWN
 RUDDER (High Rate) 2" LEFT & RIGHT, (Low Rate) 1 1/4" LEFT & RIGHT
 (ALL MEASUREMENTS AT WIDEST POINT OF CONTROL SURFACE)



FUEL LINE HOLES
 THROTTLE CONTROL CABLE HOLE
 THRUST LINE
 ENGINE MOUNT ATTACH TO F1 WITH 6-32 SOCKET HEAD CAP SCREWS & BLIND NUTS



ENGINE RECOMMENDATION:
 120 to 180 r.p.m. 4 stroke or
 25 cc. Gasoline Engine



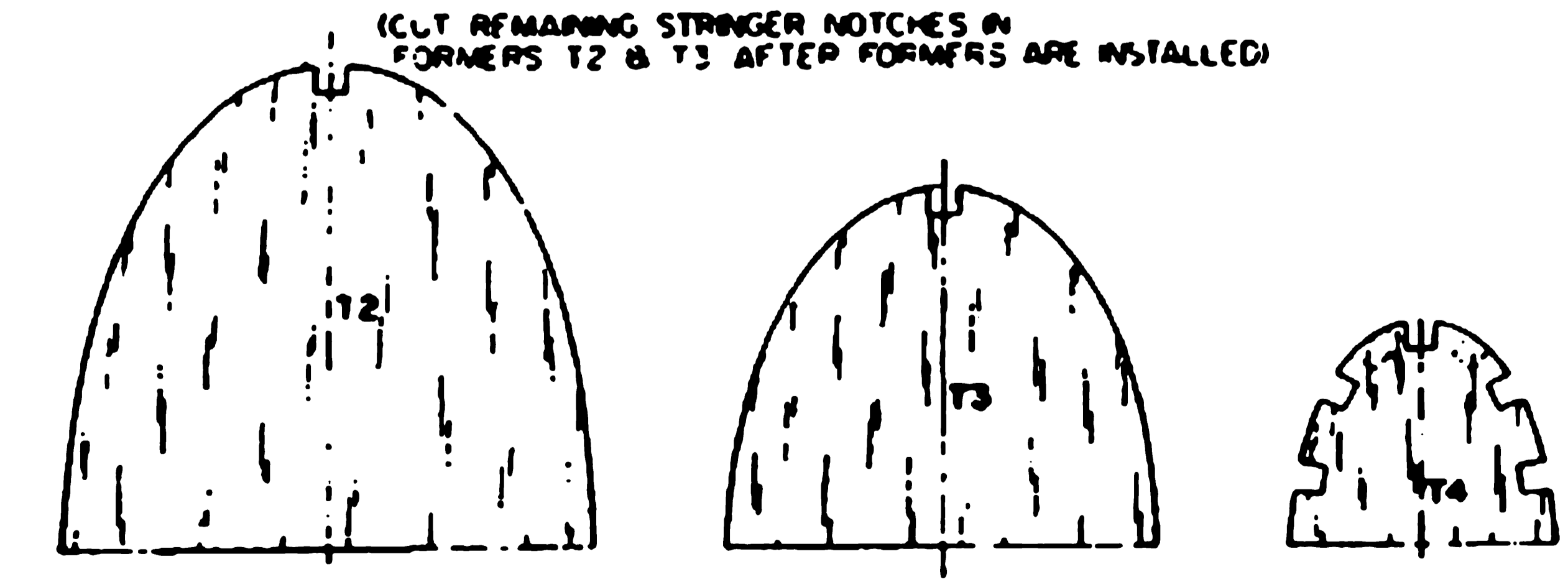
ENGINE MOUNT
 LIGHTENING CUT OUT IN FUSELAGE DOUBLER

DENOTES 1/8\"/>
 SIDE & DOUBLER OUTLINE

NYLON CONTROL HORN
 SULLMAN 1586H STEERABLE
 TAILWHEEL BRACKET ASSEMBLY
 (ATTACH W/ NO 4 SELF TAPPING
 SCREWS)

TAILWHEEL
 NOTCH FOR TAIL BRACE WIRE RETAINER STRAPS

NOTE: ALL WOOD IS BALSA, UNLESS NOTED OTHERWISE



ALL TURTLE DECK FORMERS ARE 1/4\"/>
 SHEET

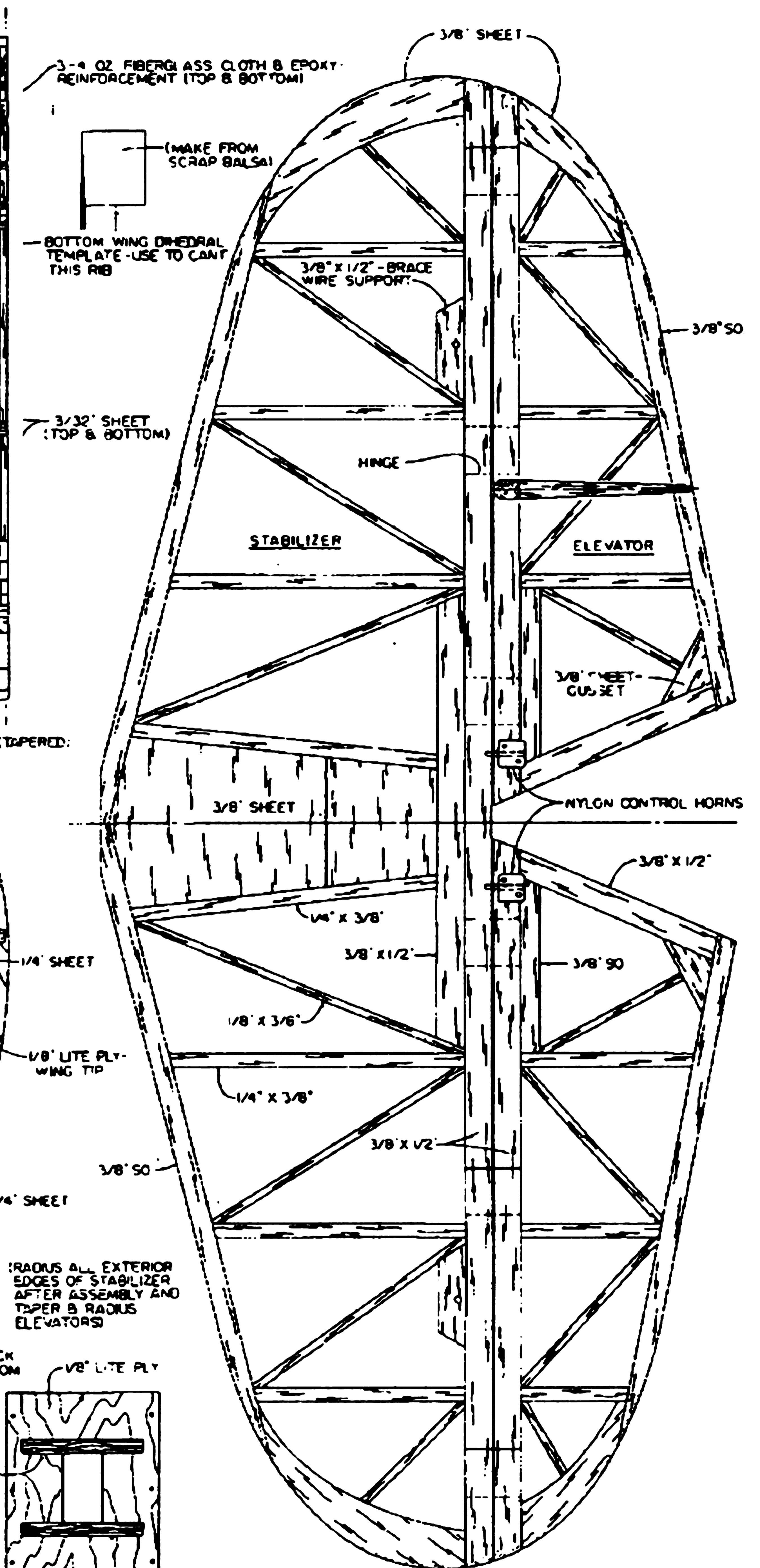
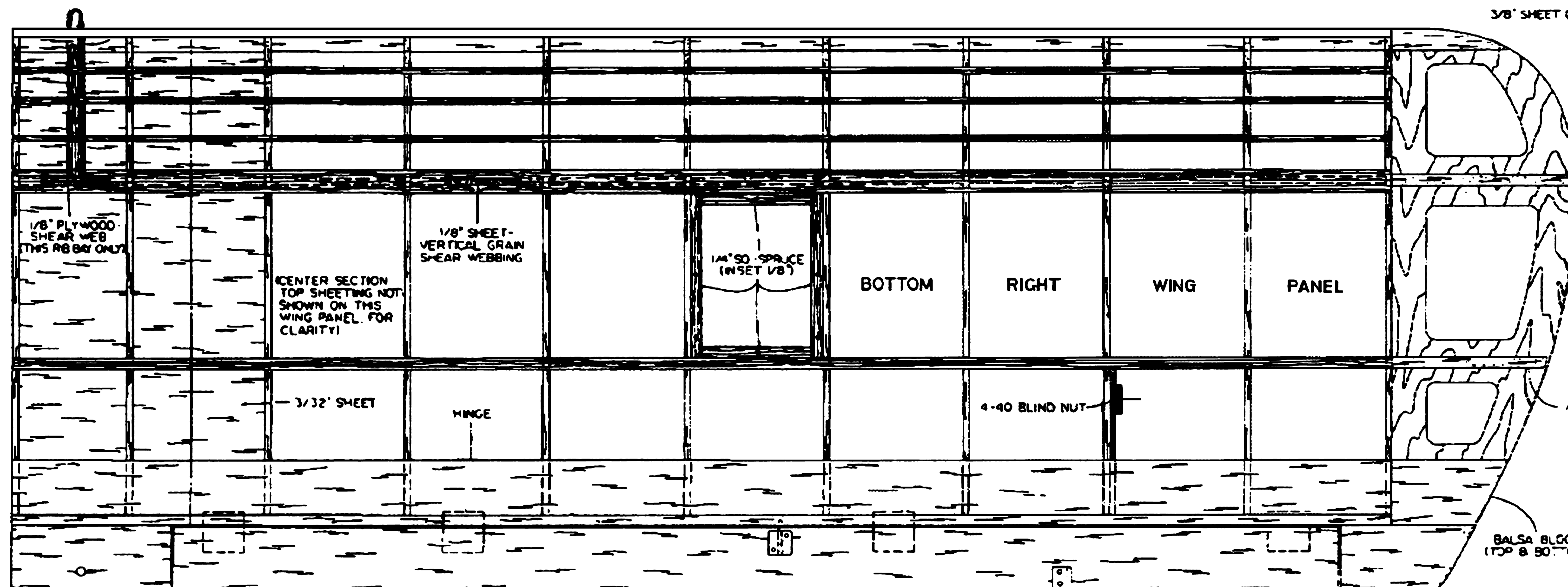
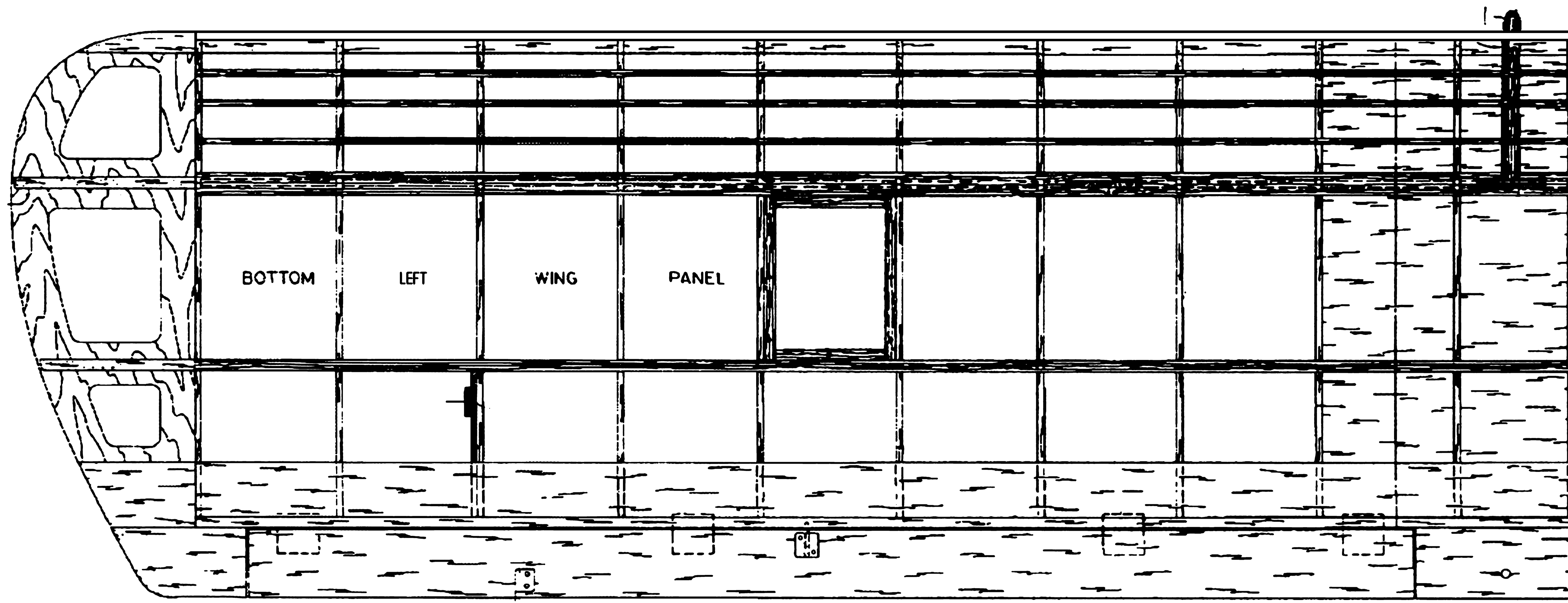
SHEET 1 OF 3

©1988 ALL COMMERCIAL RIGHTS RESERVED

BIG OLD BIPE
 A SPORT BIPLANE DESIGN

DESIGNED BY
 O B "DOC" MATHEWS

PLANS BY
Bob Walker



NOTE: TAIL BRACE WIRES ARE 2-56 THREADED ROD WITH THREADED CLEVIS AT ONE END & SOLDER LINK AT OPPOSITE END. MOUNT WITH 4-40 x 3/4\" MACHINE SCREWS & LOCK NUTS. ATTACHED TO SIG (SH709) RETAINING STRAPS, AT ALL LOCATIONS.

ALERON SERVO MOUNTING PLATE COVER

SECTION A-A

1/4\" SHEET

1/8\" LITE PLY - WING TIP

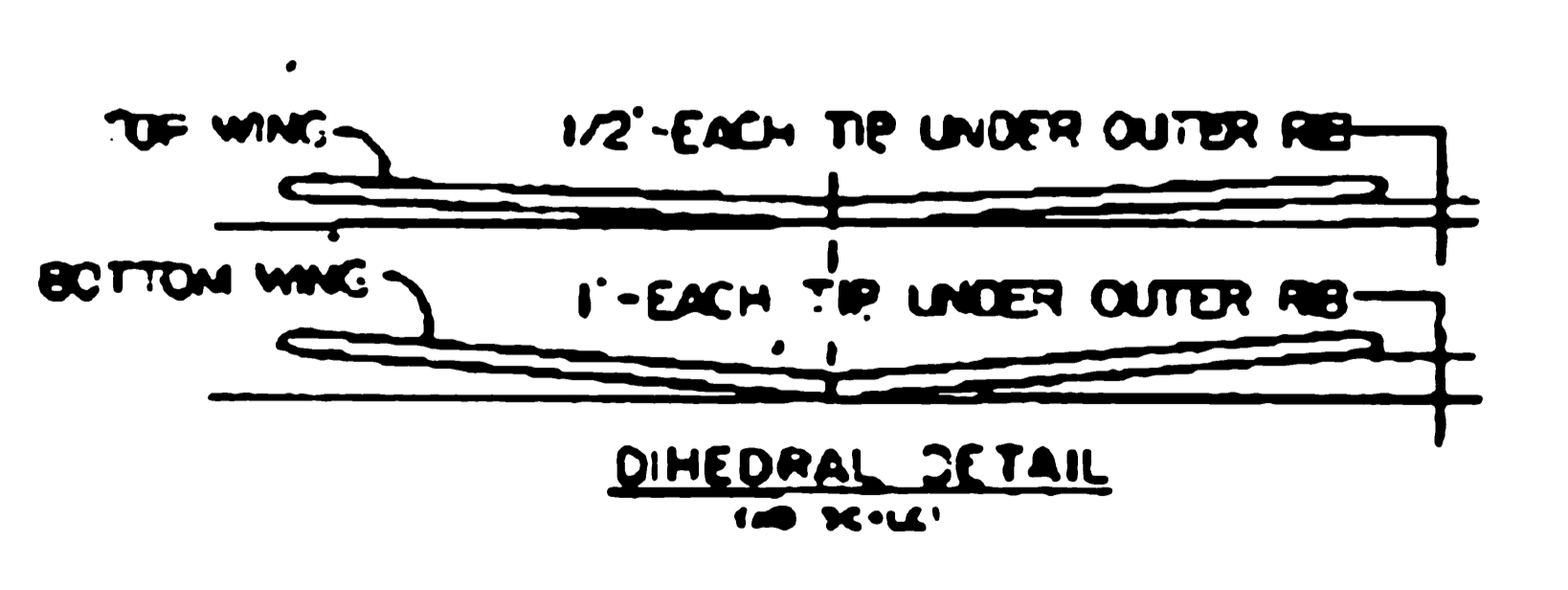
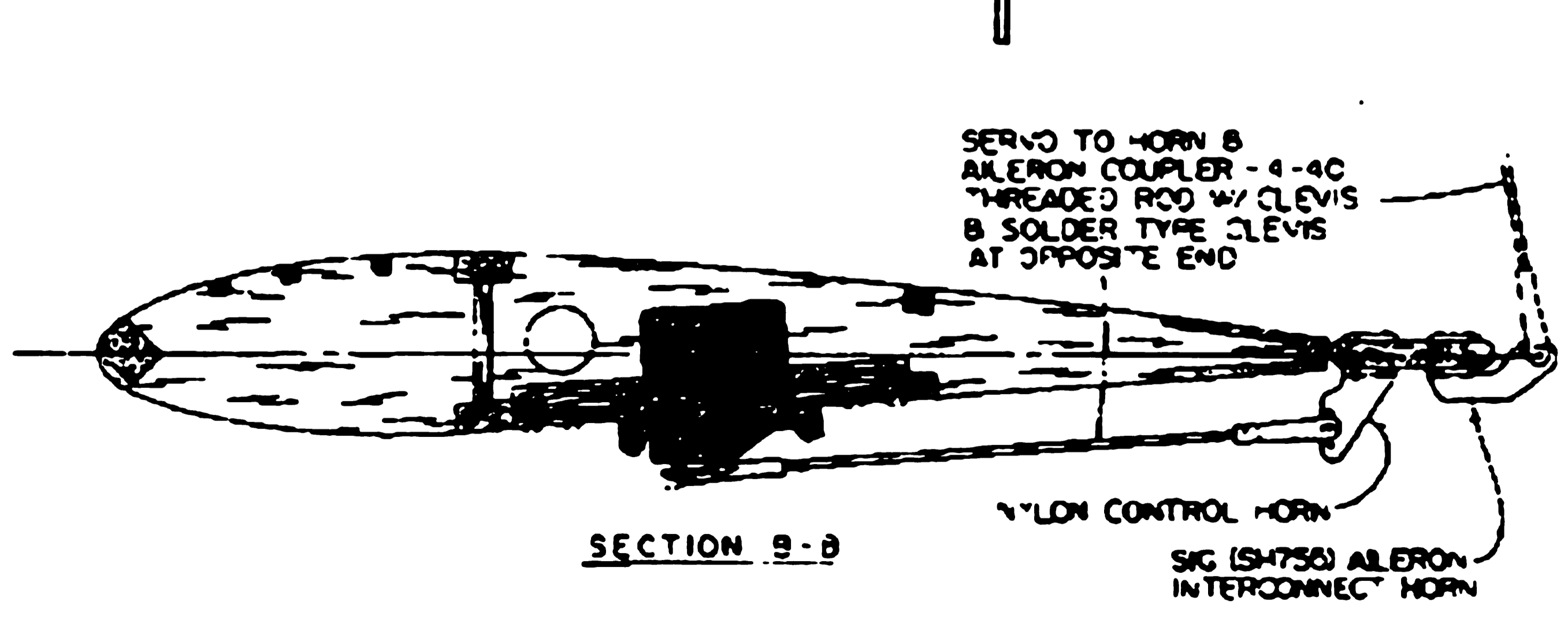
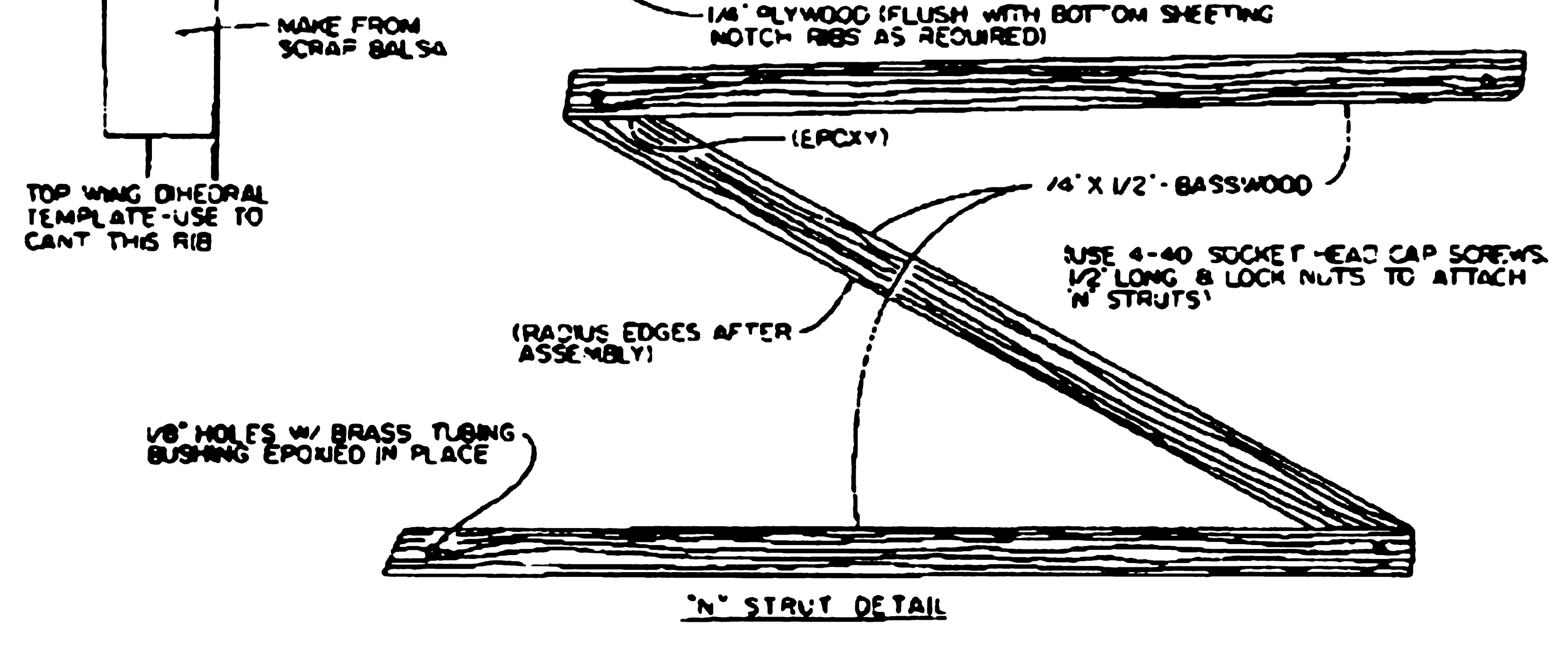
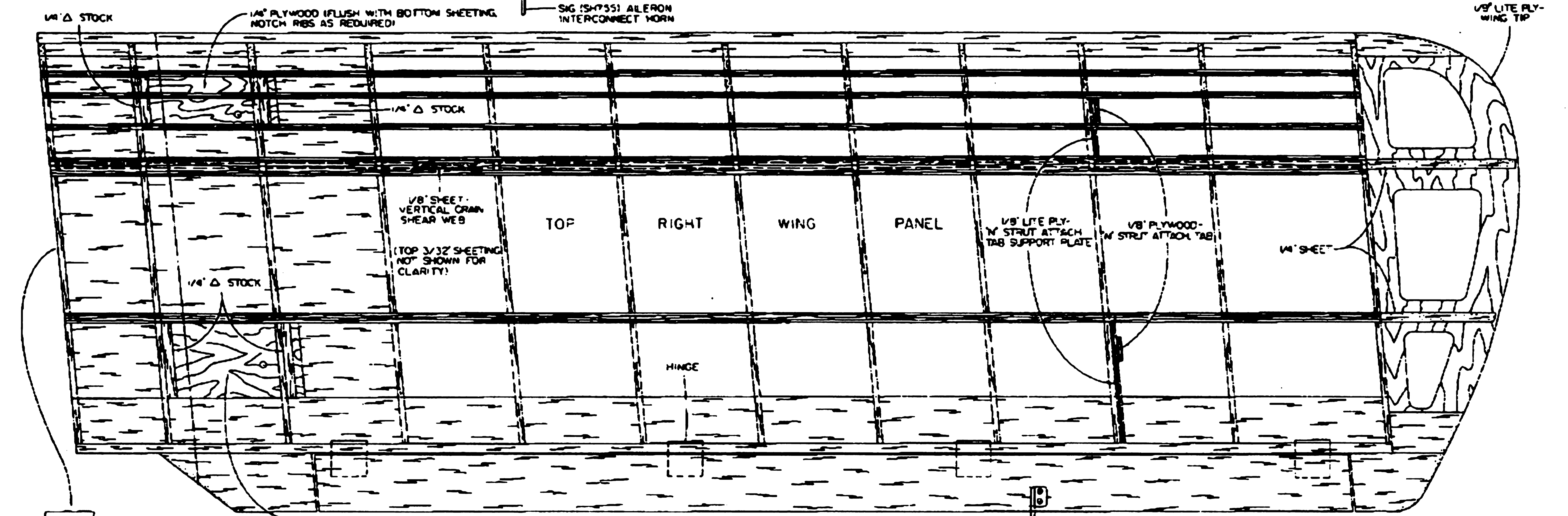
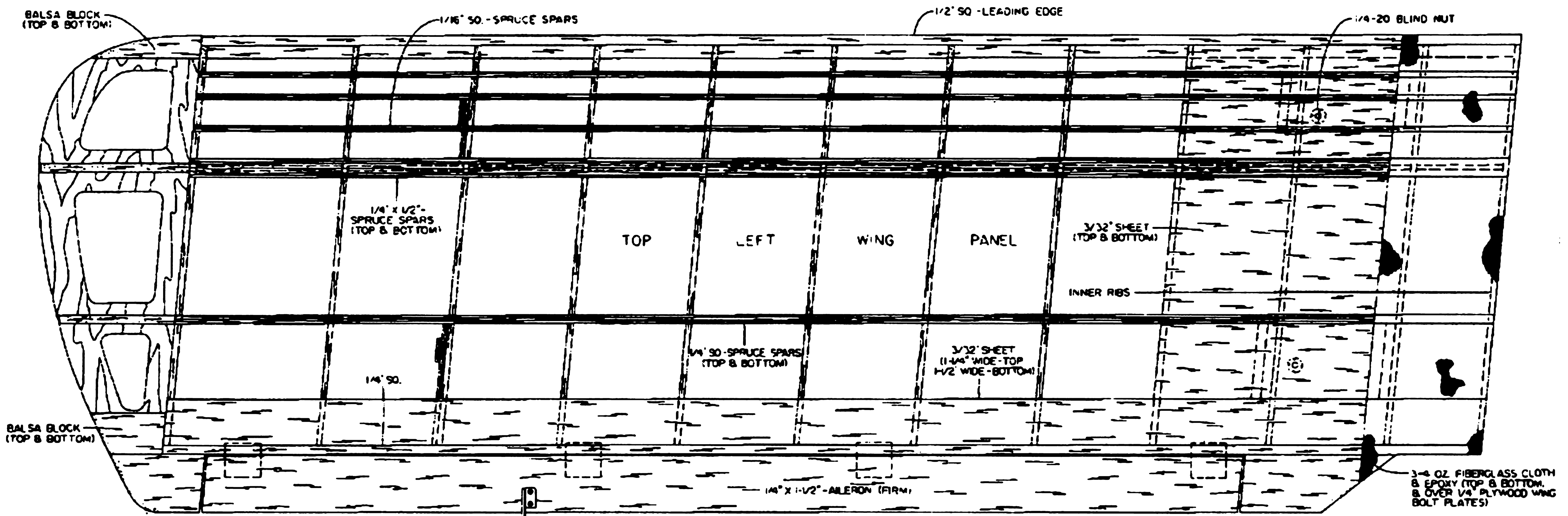
SHEET 2 OF 3

BIG OLD BIPE
A SPORT BIPLANE DESIGN

DESIGNED BY O. B. 'DOC' MATHEWS

PLANNING BY Bob Zentler

PLANNING NO 1314



FROM ALL COMMERCIAL SUPPLY SOURCES
BIG OLD BIPE
 A SPORT BIPLANE DESIGN
 DESIGNED BY: O. & 'DOC' MATHEWS
 PLANNED BY: Bob Zetter