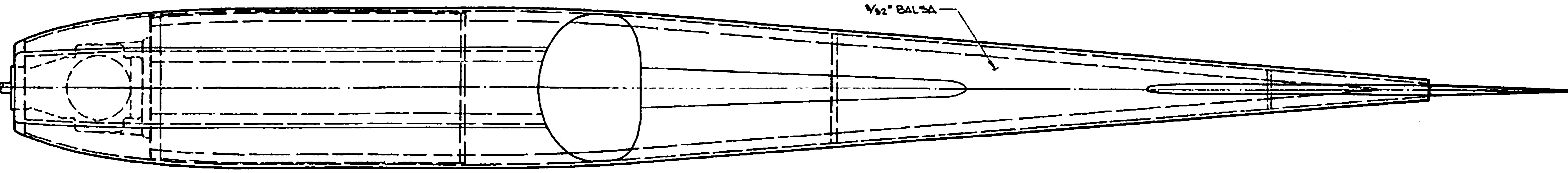


F2-1/4" PLYWOOD



FUSELAGE TOP VIEW

1/32" Balsa

RED  
WHITE  
GREEN

SCALE FIN OUTLINE

1/16" RIBS

1/4" SQ

REMOVABLE COWL SECTION

UPPER WING @ 0° INCIDENCE

1/2" PLY DOUBLER (SHADED)

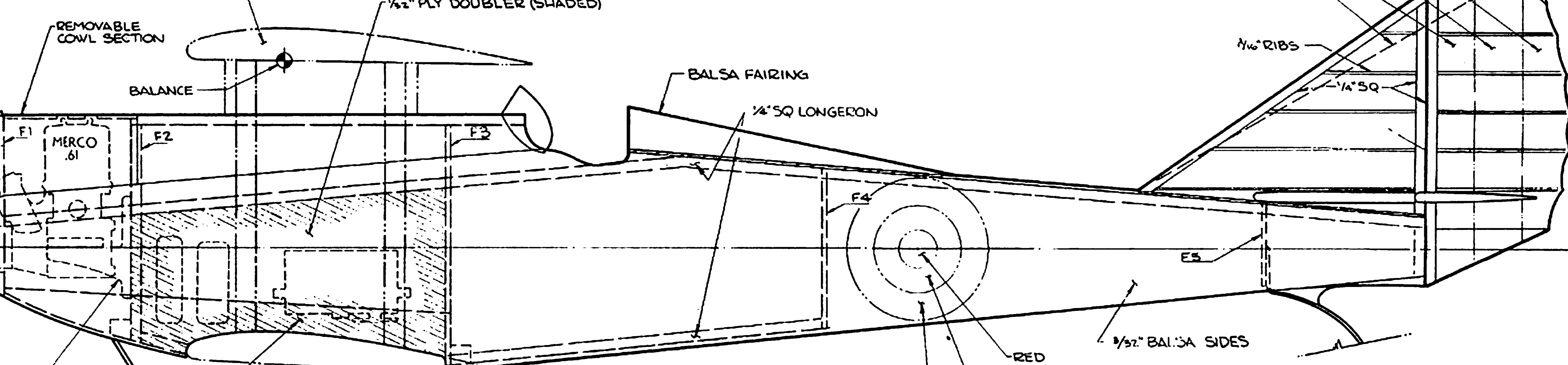
BALANCE

BALSA FAIRING

1/4" SQ LONGERON

CUT OUT FOR COOLING

F1 1/4" PLYWOOD



FUSELAGE SIDE VIEW

WHITE  
RED  
GREEN

1/32" Balsa SIDES

TYPICAL CABANE STRUT  
INSTALLATION, FIT ON ASSY.  
MAKE STRUTS FROM 1/4" TUBE,  
FLATTENED TO A STREAM LINE  
SECTION

TATONE MOUNT

1/4" SHEET Balsa  
WING SADDLES

3/4" WILLIAMS BROS WHEELS

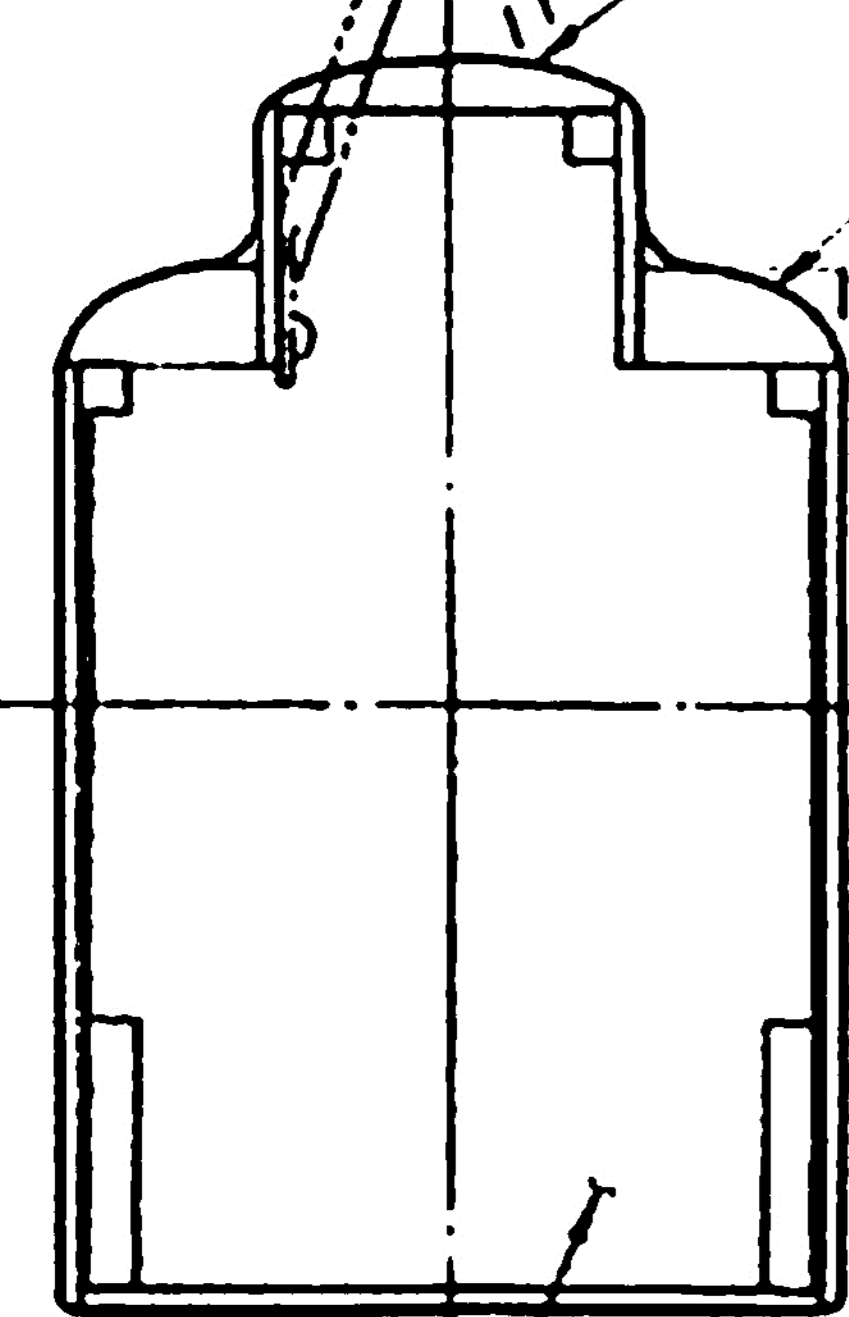
F4-1/8" Balsa

F-5 1/8" Balsa

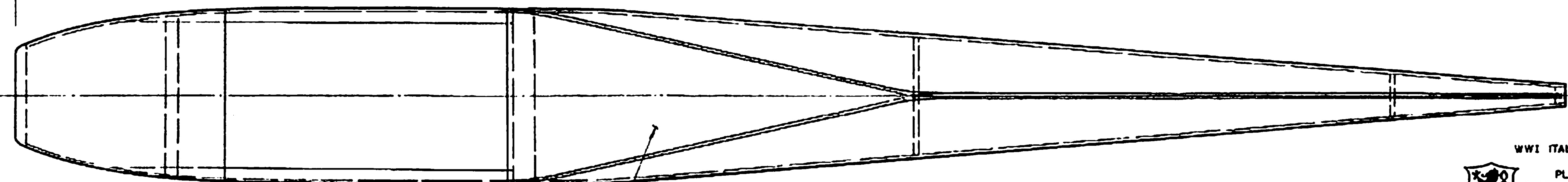


1/4" Balsa

1/2" x 1" Balsa



F3-1/8" Balsa



FUSELAGE BOTTOM VIEW

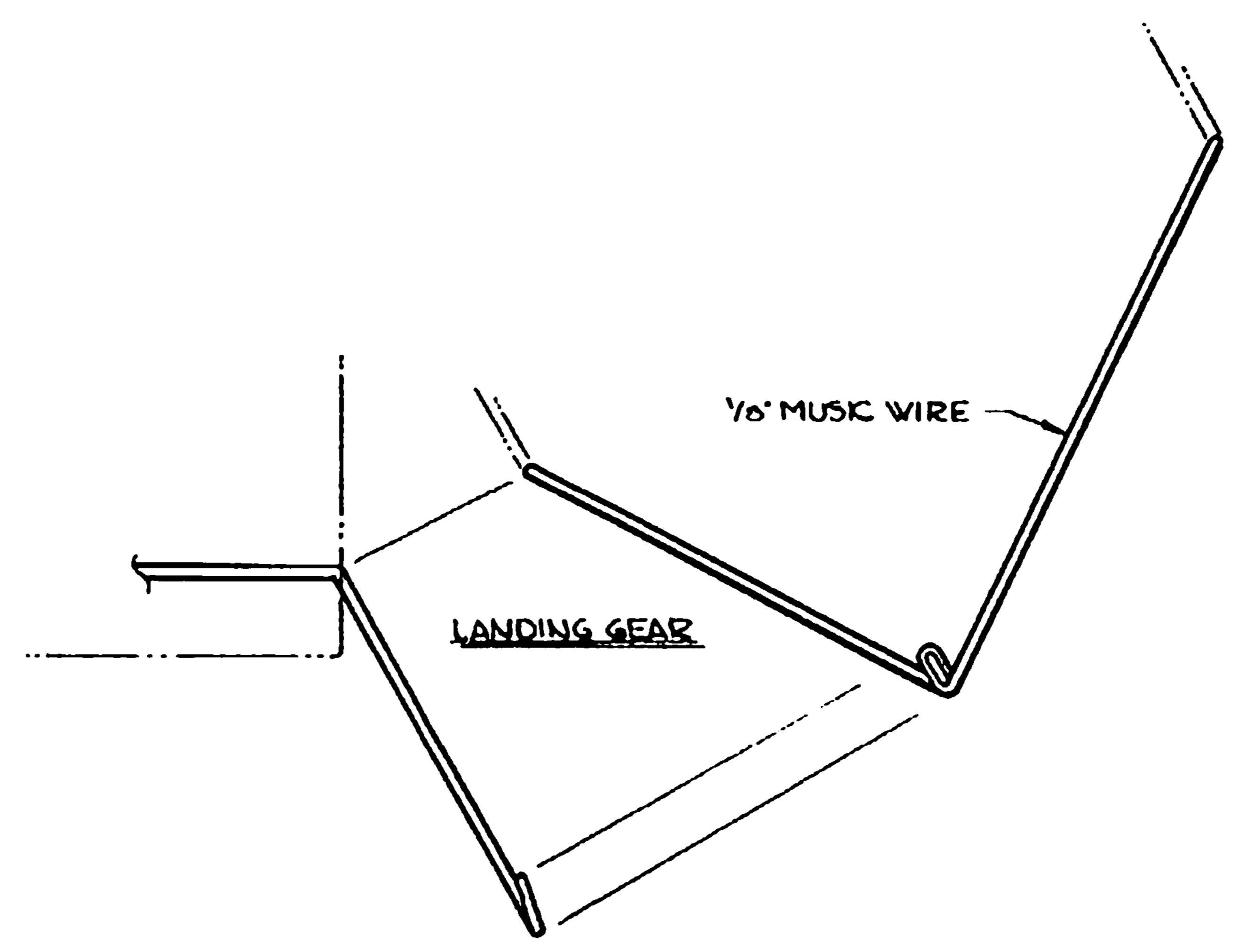
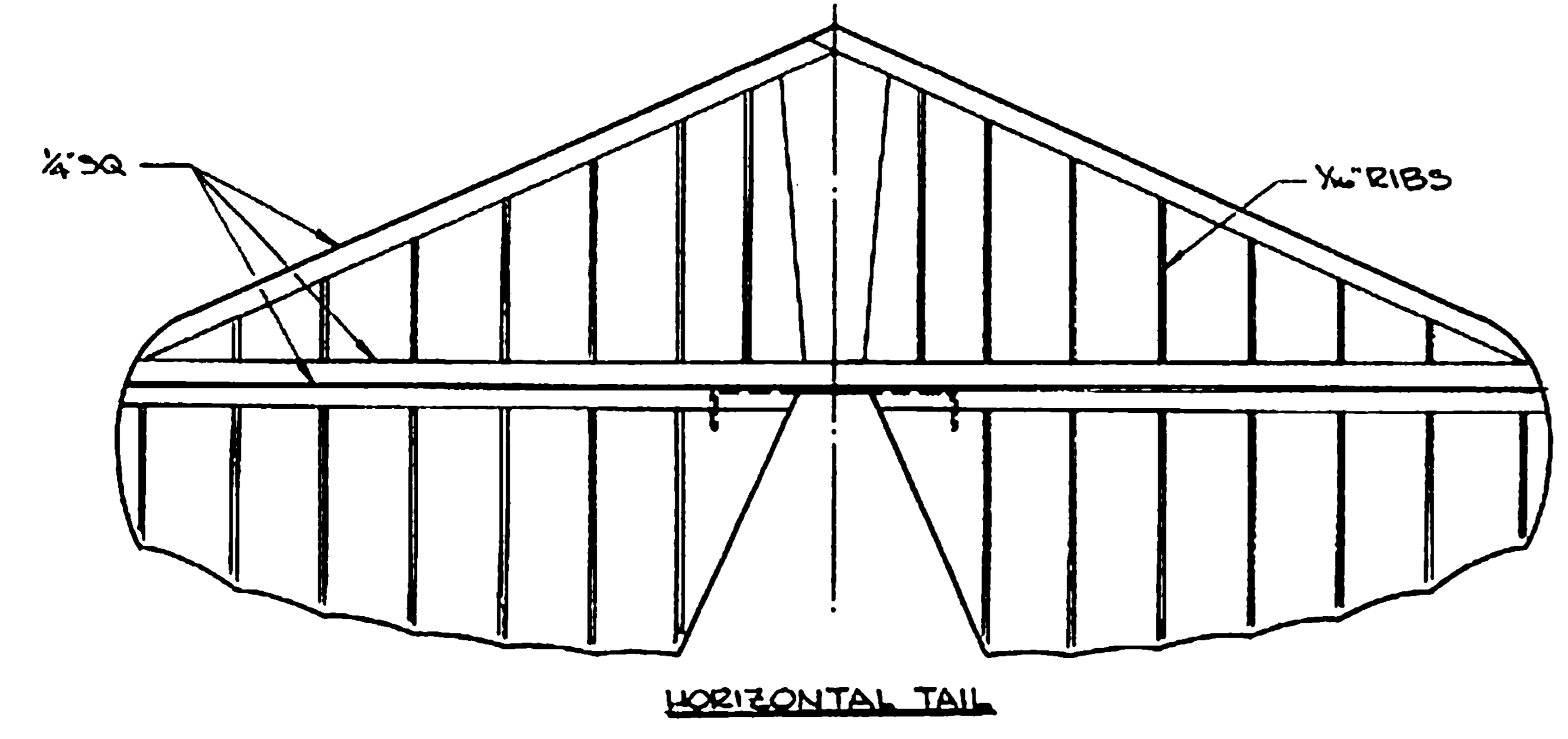
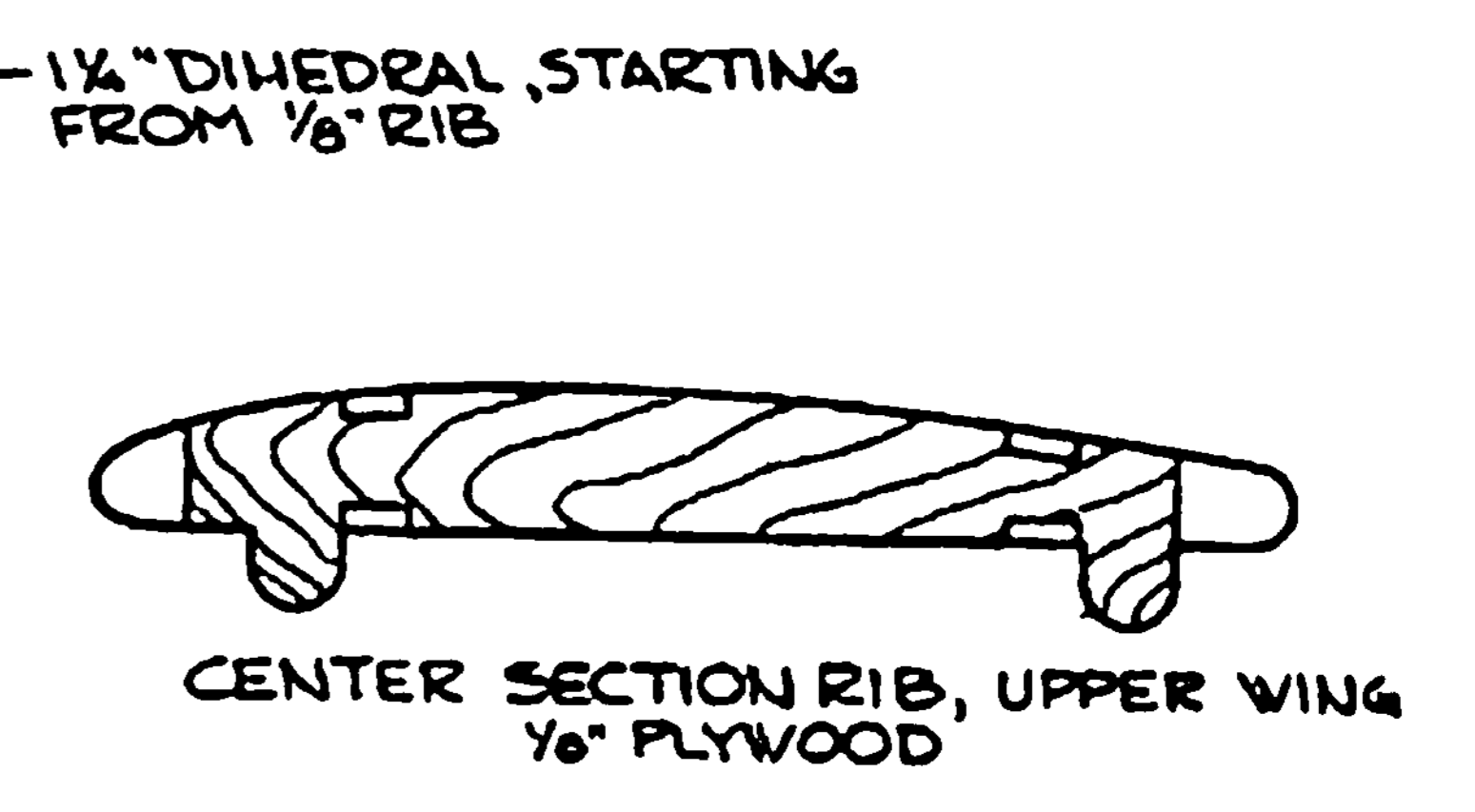
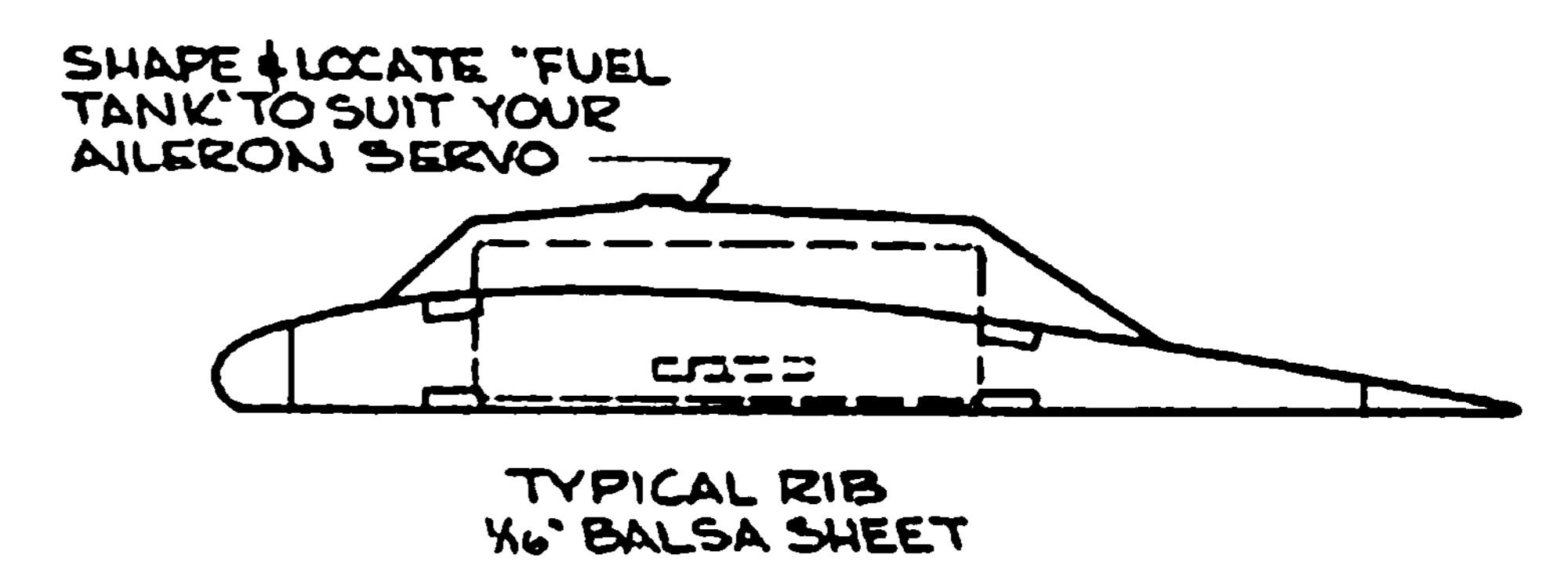
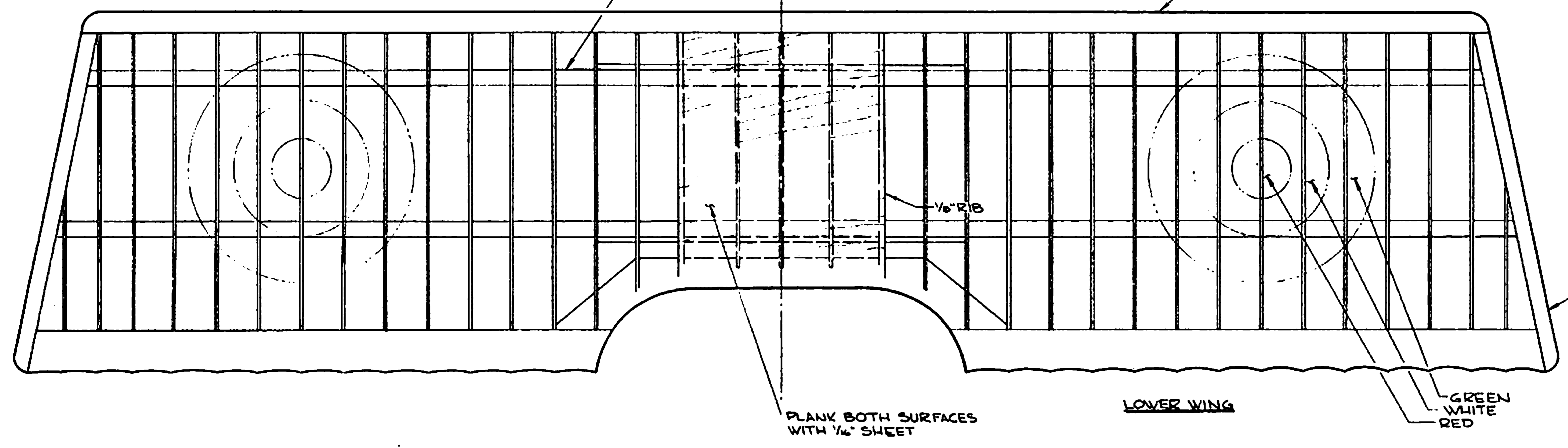
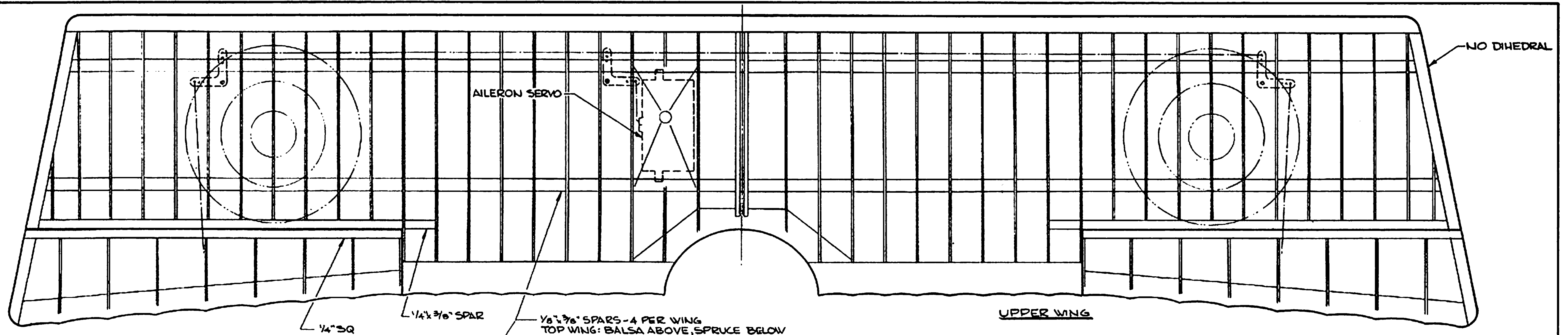
1/8" Balsa SHEET  
BOTTOM PIECE

WWI ITALIAN RECCE. SCOUT  
PLATE 1 OF 2

**ANSALDO SVA-5**

DESIGNED BY BUS MORFIS BUILT BY E L'HOMME

17-453



WWI ITALIAN RECCE. SCOUT

PLATE 2 OF 2

**ANSALDO SVA -5**

DESIGNED BY OUS MORFIS BUILT BY E. L'HOMME

2/2-453