

CUT OUT AFTER PLANKING FOR MG

HINGED 020 ALUM INSPECTION COVERS

1/2" HARD Balsa CRUTCH TO F6

180 HP MERCEDES ENGINE BUILD UP FROM Balsa

020 ALUM RADIATOR EXPANSION TANK SCALE AIRFOIL REF ONLY

1/8 DIA WIRE

RADIATOR PIPES 3/16 ALUM TUBING

3/32" DIA WIRE 1/8 DIA WIRE

IF THICK SECTION IS USED SET TOP AT 0, LOWER AT +2

OPTIONAL HEADREAST

RUDDER BAR

CONTROL STICK

INSTRUMENT PANEL

NOTE FIN & STAB ARE GLUED IN PLACE BEFORE FUSELAGE PLANKING IS COMPLETED

SUGGESTED INLARGED OUTLINE FOR BETTER FLYING PROTOTYPE FIRST FLEW WITH SCALE SURFACES

1/4x3/8" SPRUCE POST SOFT 1/4" SHEET

FIN & RUDDER COVERED WITH SOFT 1/16" SHEET SOFT 1/2" SHEET

NYLON HINGES SCALE LOCATION

SIMULATE RIBS WITH 1/16 TAPE

1/8x1/2 SAND TO SHAPE AFTER ASSEMBLY

1/4x1/2 STERN POST

STAB 0° INCIDENCE

3/16 MED Balsa CUTOUT FOR STAB F12

1/2" LIGHTENING HOLES CENTER CORE ONLY

OPTIONAL COWL STAP

SOFT Balsa BLOCK

PORT ONLY

CYLINDER PLATFORM F24 3/32" PLY

GUN PLATFORM 3/32 Balsa F25

RECIEVER LOCATED THIS AREA

1/8" PLY SERVO MOUNT F22

CRUTCH 1/4x1/2" MEADUM Balsa

1/8 SHEET GUSSETS

MODEL SPINNER SEPERATION LINE

SUPER TIGER 60 TANKMOUNT SHOWN 4" DOWN 3" RIGHT

NICAD POWER PACK LOCATED THIS AREA WRAP WITH FOAM

SOFT Balsa BLOCK HOLLOW TO 5/16" WALL THICKNESS

ST BD ONLY

RUDDER, ELEV, MOTOR SERVOS, SIDE BY SIDE

5/16 SQ Balsa PUSH RODS

SINGLE NYLON BOLT-1/4" OR 1/4 DOWEL IN TO F4 WIRE AXLE LIMIT

TWO NYLON BOLTS 1 7/16" ON CENTER

SIMULATED RIVETS 020 ALUM KICK IN FOOT STEP

FUSELAGE IS PLANKED WITH SOFT LIGHT 3/32 X 1/4" Balsa STRIPS

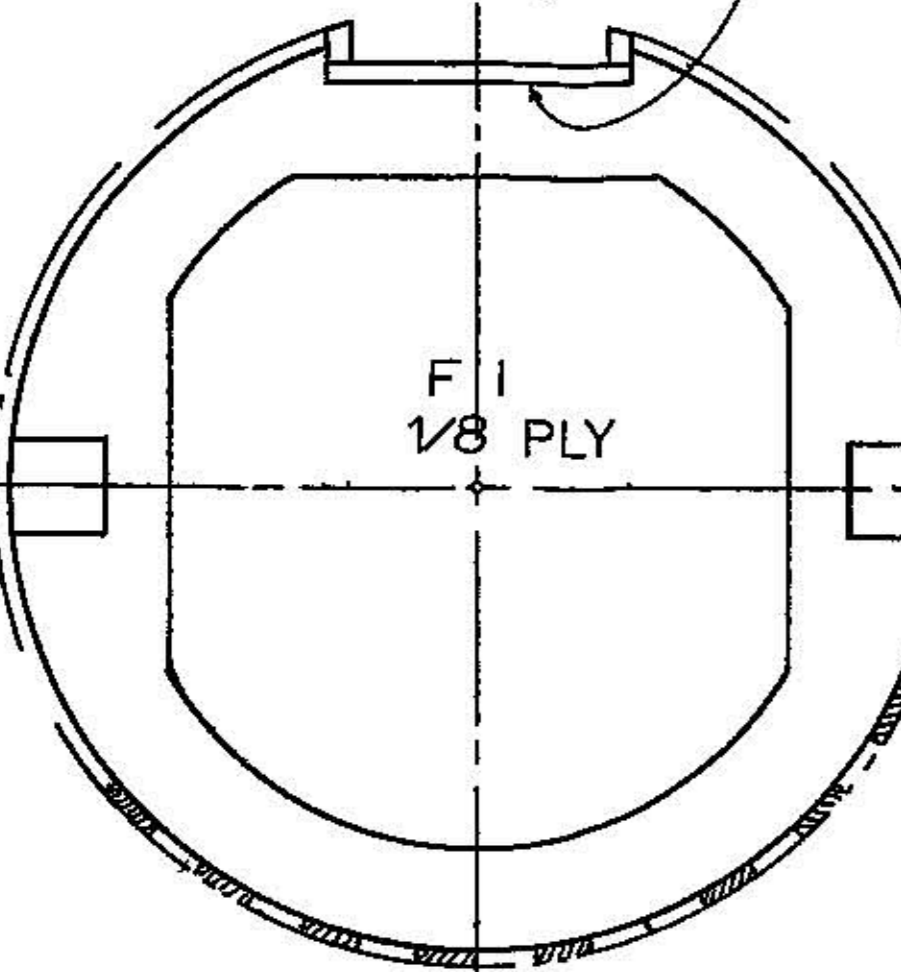
3/16 Balsa CENTER CORE 1/8 PLY 1/8 Balsa

EPOXY FILLET RUBBER SHOCK CORD

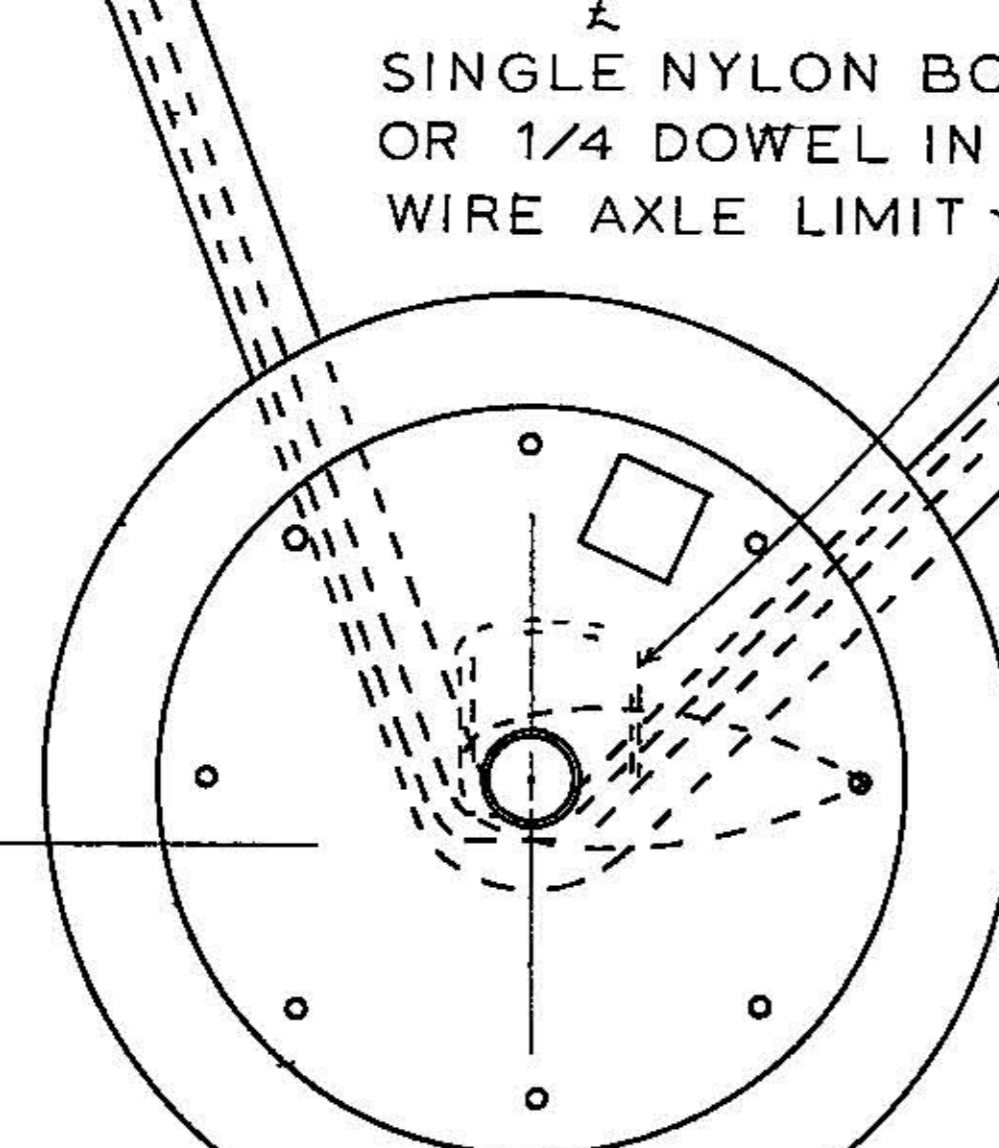
1/16" HOLE FOR 0 80 NUT & BOLT HICKORY SKID

SIMULATED SCREWS 3/32 HOLES 032 ALUM FITTINGS

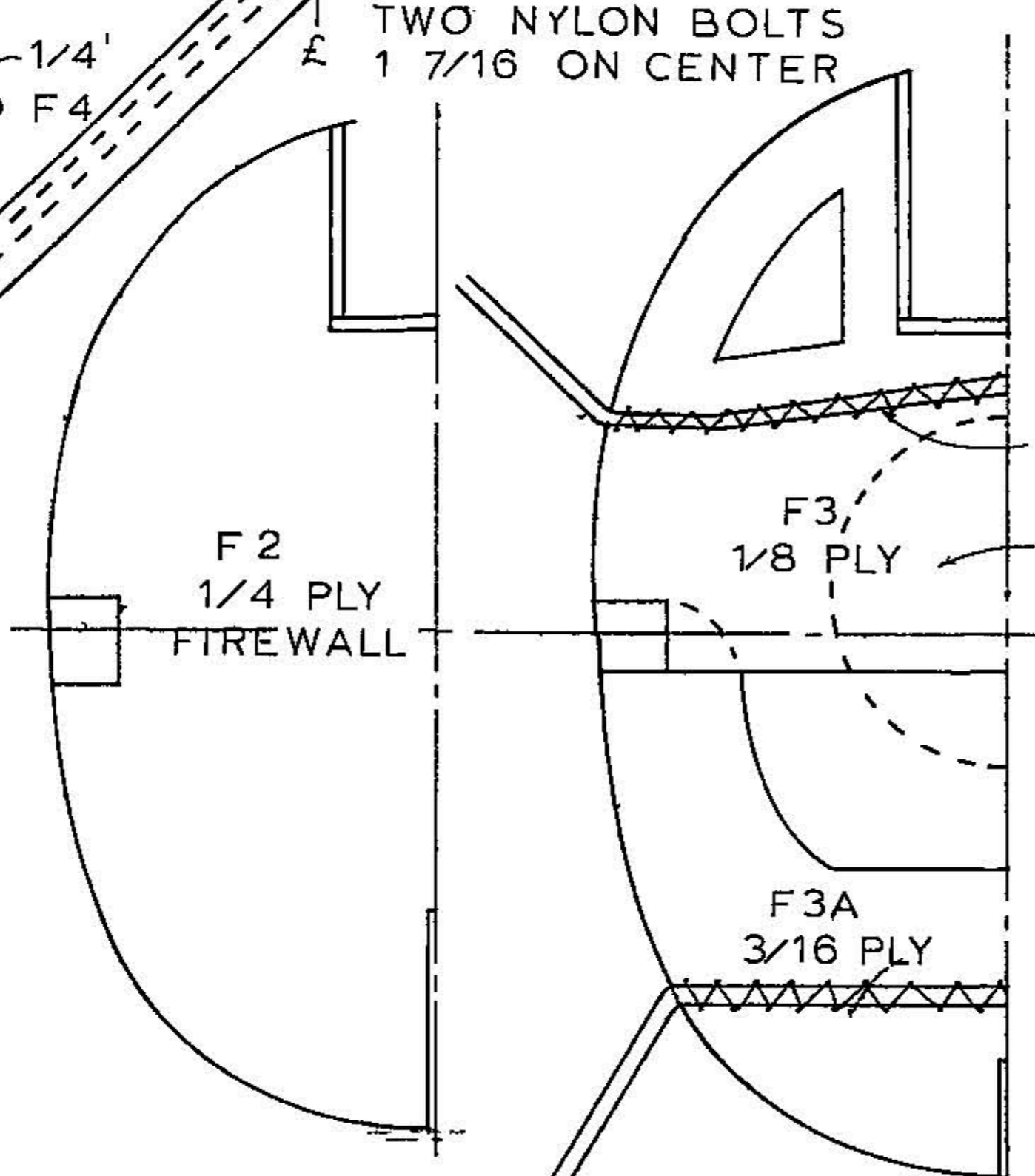
LAMINATED ASH & WALNUT SCALE PROP 3/32 PLY CYLINDER PLATFORM



SHADED PLANKING IS MEDIUM HARD TO



SIMULATED CONICAL METAL WHEEL COVERS AND SCREWS

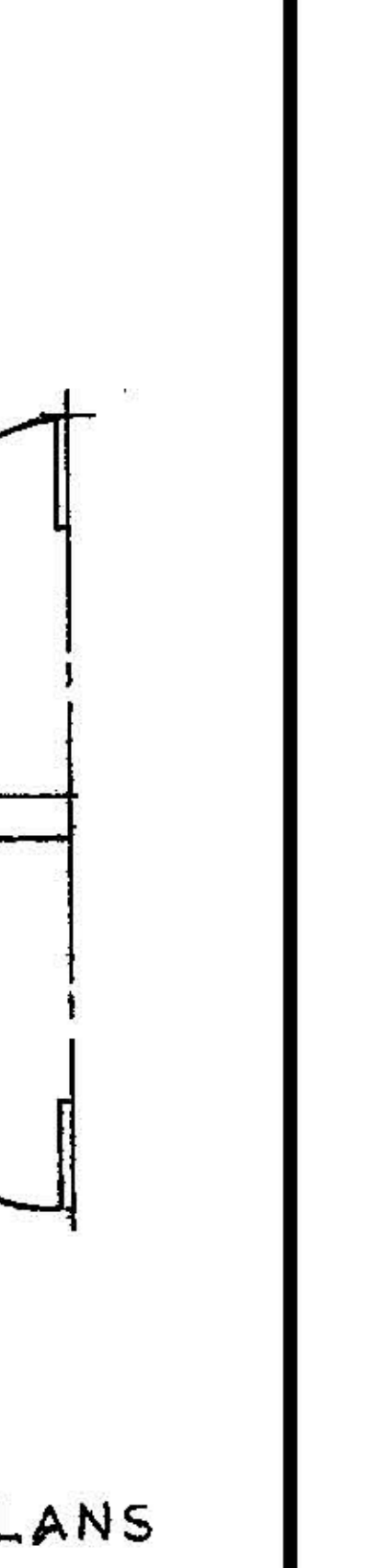
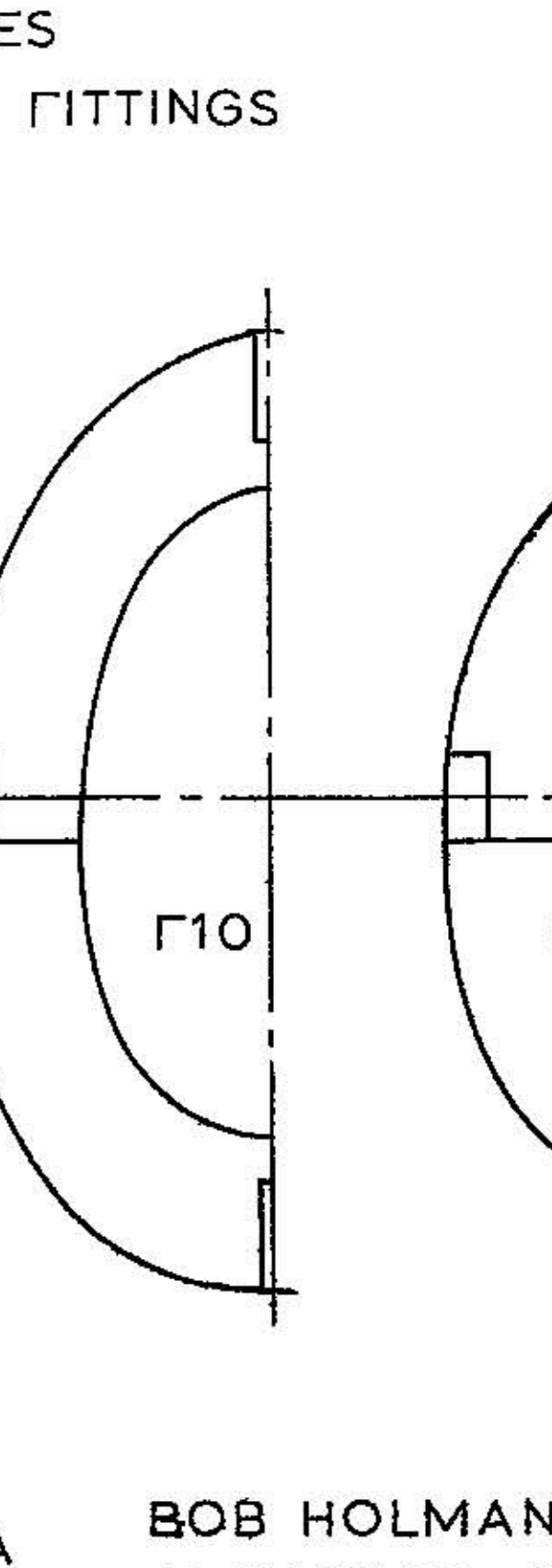
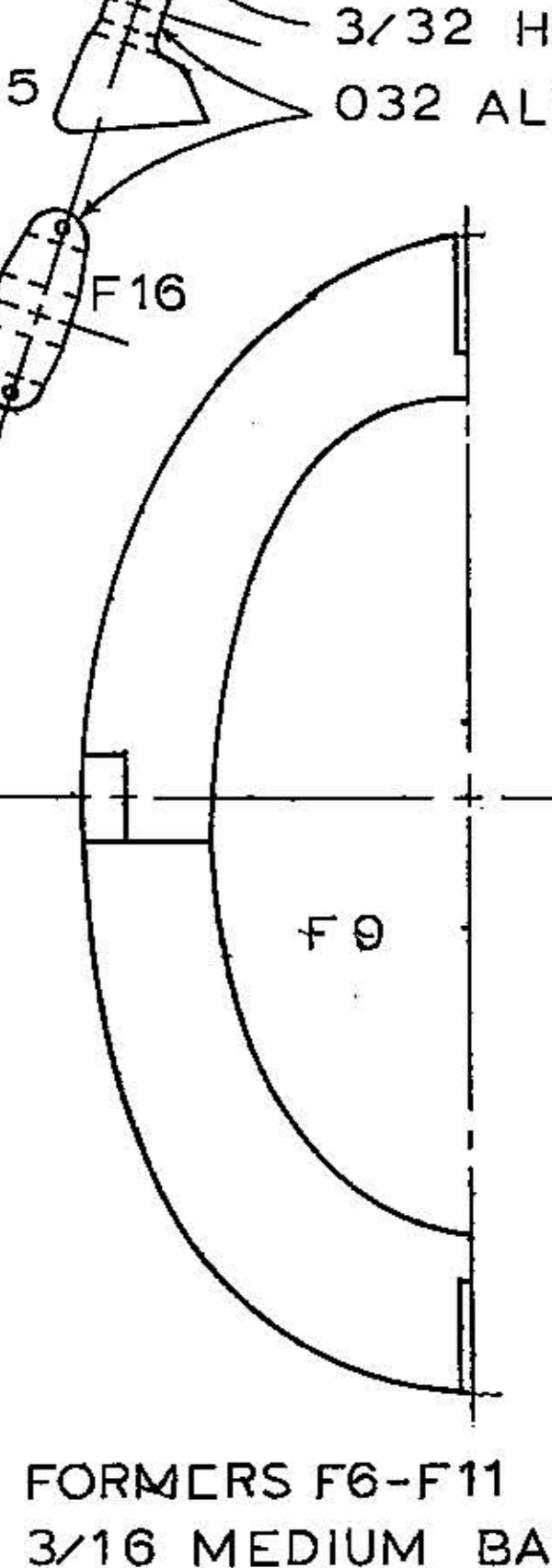
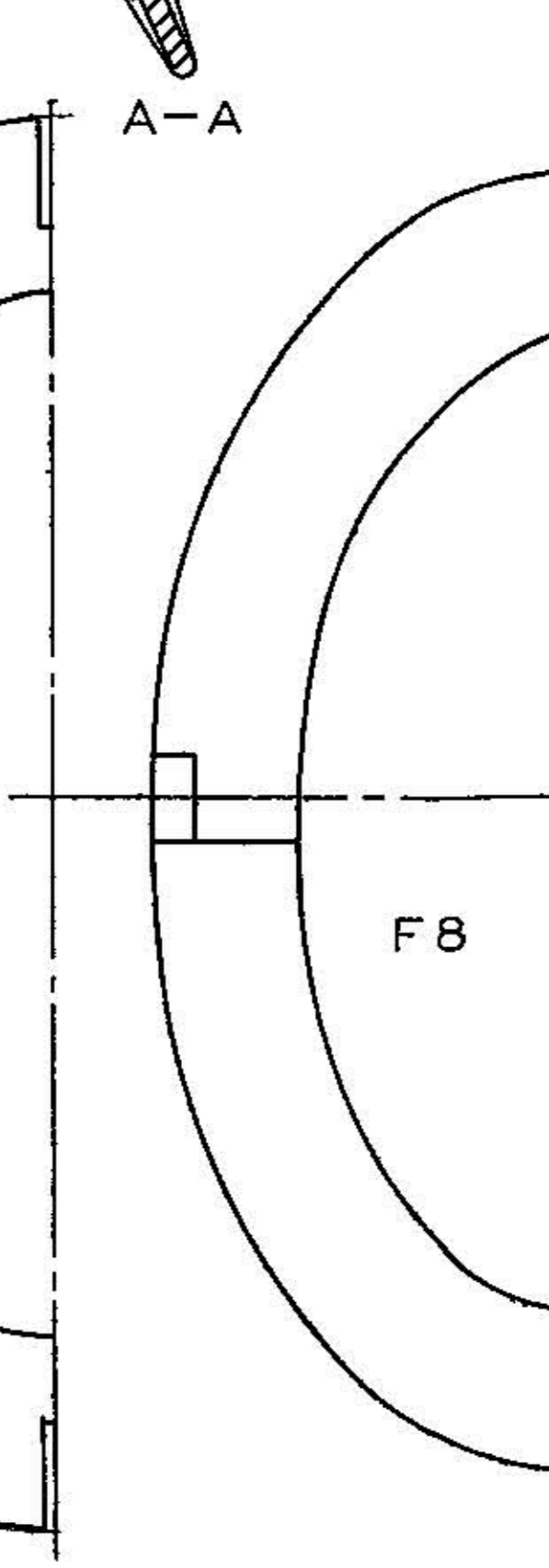
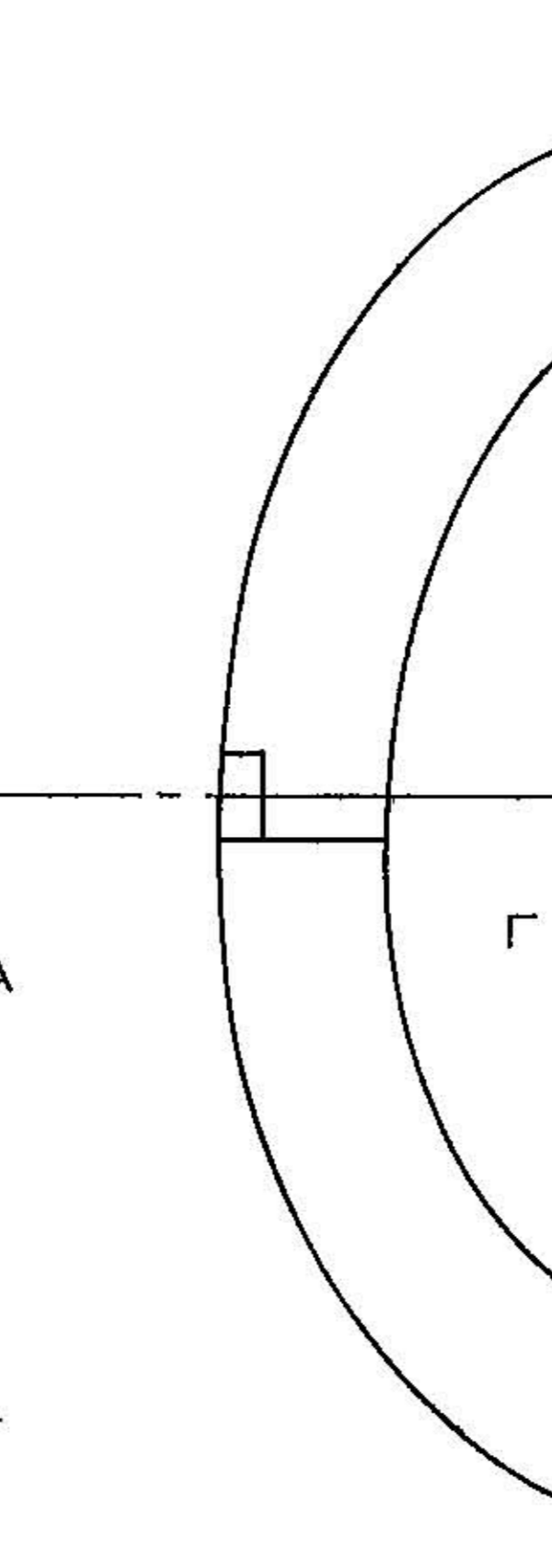
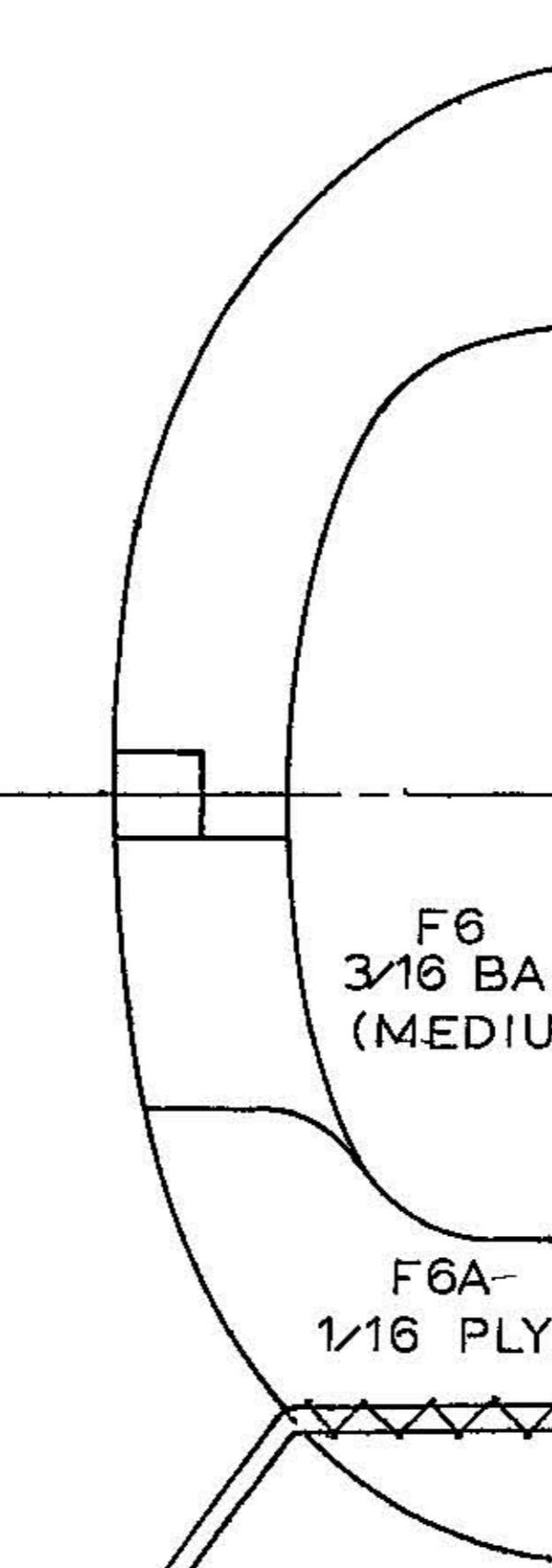
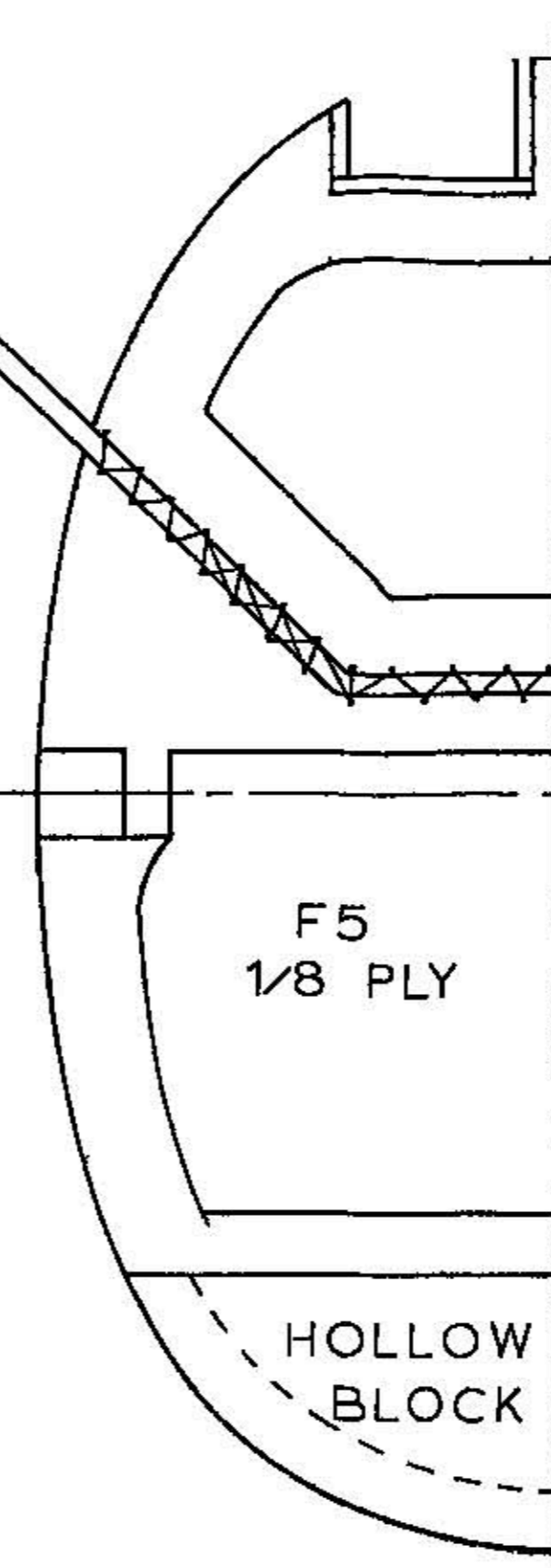


1/8 DIA WIRE CABANE STRUT WRAP WITH FINE WIRE AND EPOXY

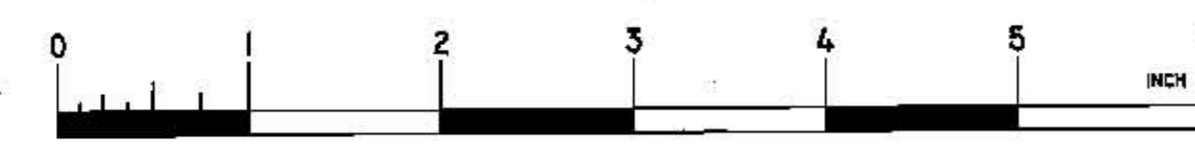
CUT OUT TO FIT TANK USED

F5 1/8 PLY

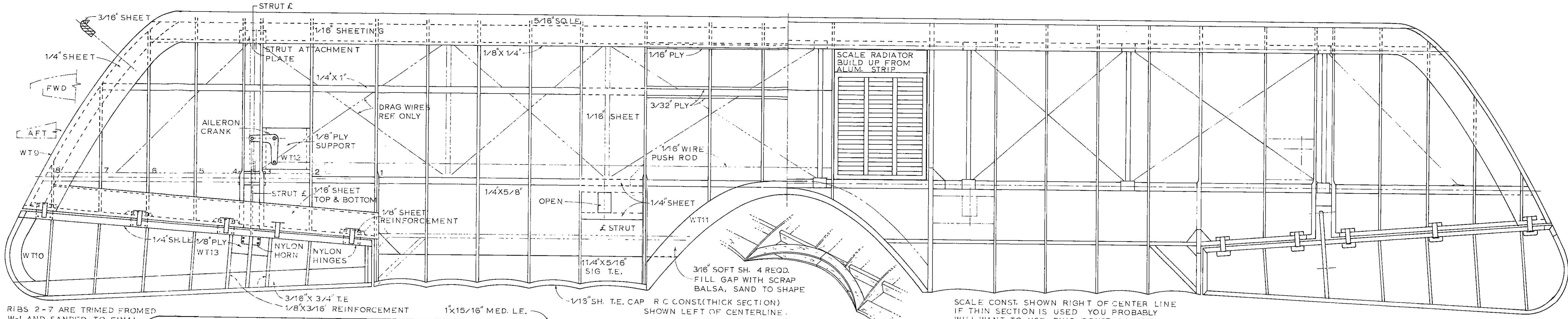
F4 3/16 Balsa MED HARD



FORMERS F6-F11 3/16 MEDIUM Balsa

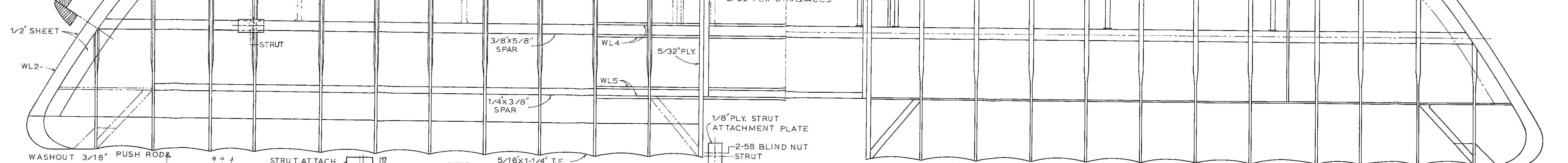


BOB HOLMAN PLANS ALBATROSS DVA PLATE 1

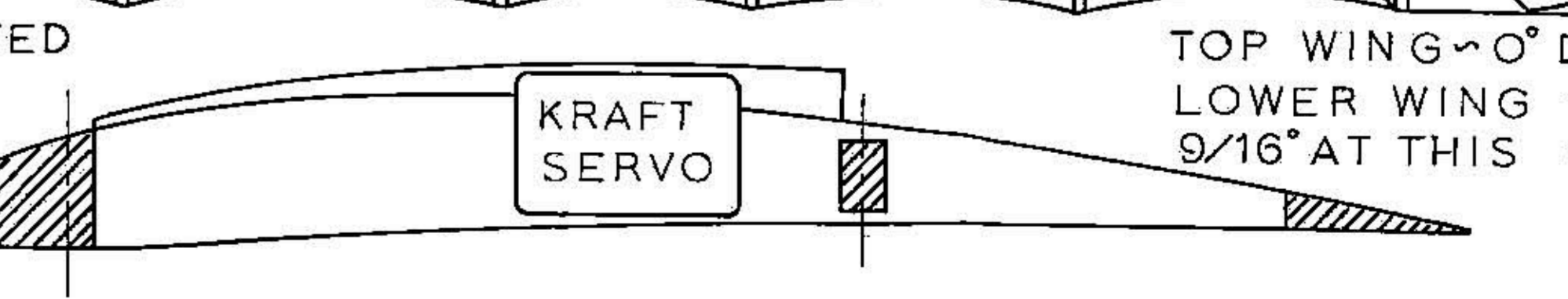
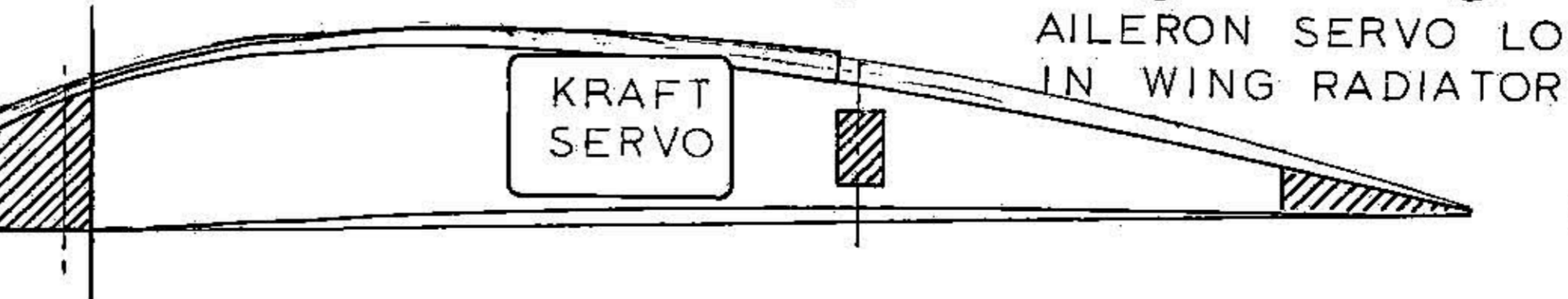
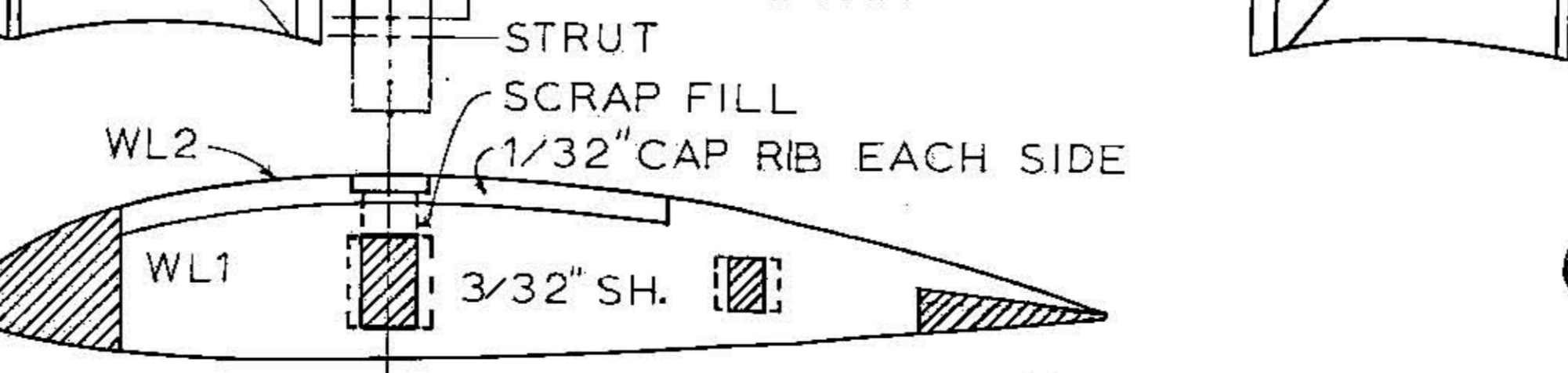
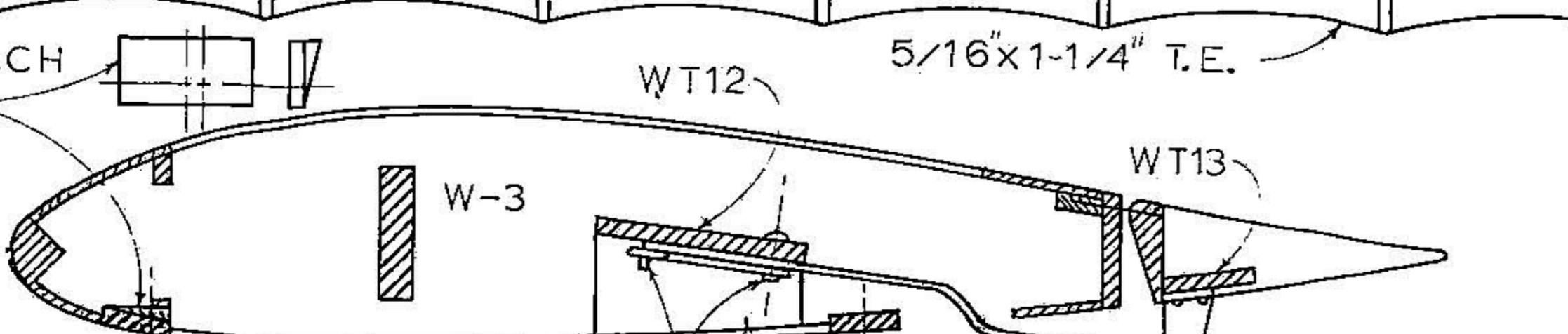
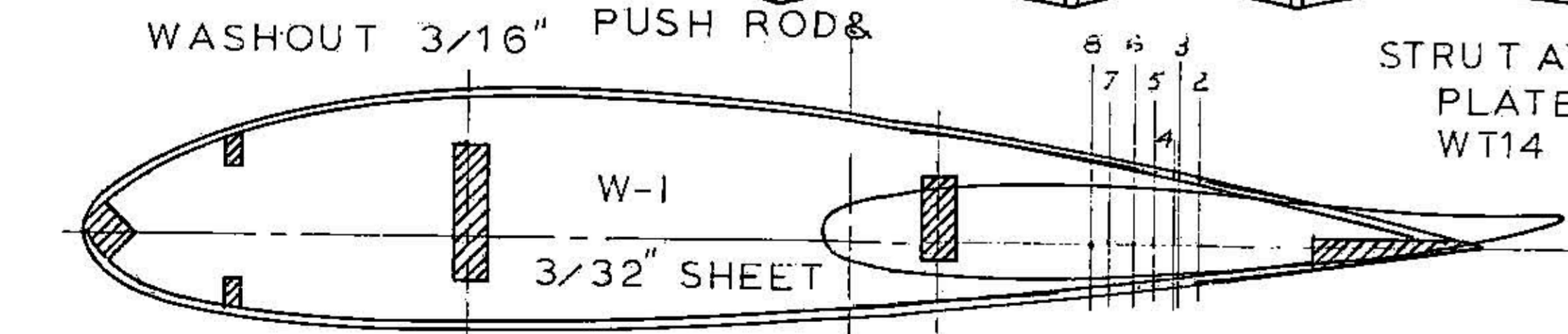


RIBS 2-7 ARE TRIMMED FROMED W-1 AND SANDED TO FINAL SHAPE AFTER ASSEMBLY

WASHOUT AILERON 1/4" AT TIP



LOWER WING WAS PLYWOOD COVERED TO AUX. SPAR



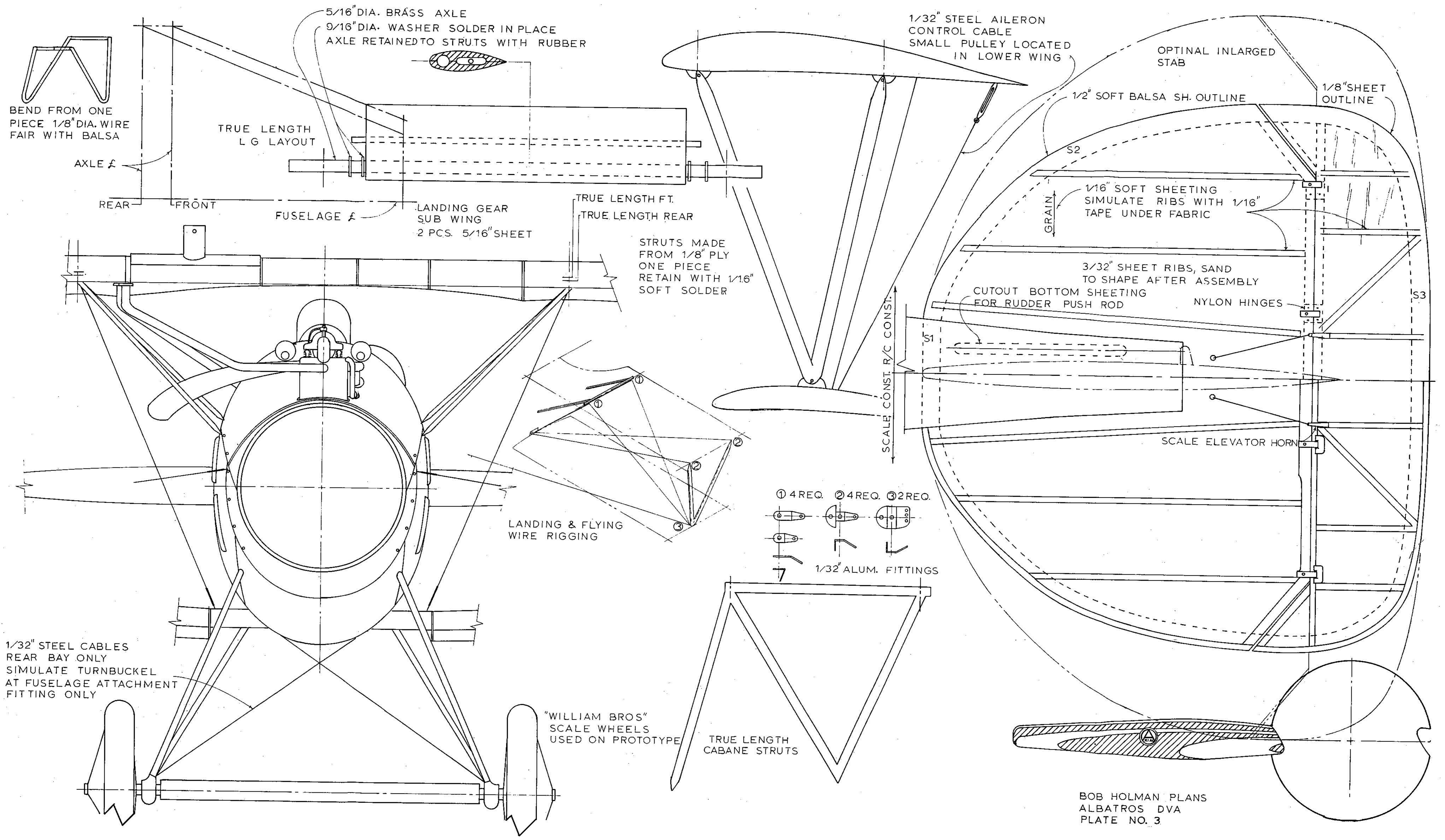
TOP WING ~ 0° DIH. LOWER WING 1 1/2° DIH. 9/16" AT THIS STATION

CHARLES FIRST FLEW WITH A THIN SCALE LIKE SECTION FLEW WELL, WAS FAST BUT QUITE TOUCHY ON TAKE OFFS LANDINGS. CHANGED TO THIS SECTION FOR BETTER FLYING

SOLDERED WASHERS 1/8" Balsa BRACE WT15  
NYLON HORN 1/16" WIRE 1 REOD.

OPTIONAL SCALE LIKE SECTIONS GEORGE JORDON'S MODEL USED A THIN SECTION HANDLES LIKE THE REAL SHIP GEORGE SAYS YOUR CHOICE SHOULD DEPEND ON YOUR FLYING AND HOW CLOSE YOU WANT TO STAY TO SCALE

BOB HOLMAN PLANS ALBATROS DVA PLATE NO. 2



5/16" DIA. BRASS AXLE  
 9/16" DIA. WASHER SOLDER IN PLACE  
 AXLE RETAINED TO STRUTS WITH RUBBER

1/32" STEEL AILERON  
 CONTROL CABLE  
 SMALL PULLEY LOCATED  
 IN LOWER WING

OPTINAL INLARGED  
 STAB

BEND FROM ONE  
 PIECE 1/8" DIA. WIRE  
 FAIR WITH Balsa

TRUE LENGTH  
 L G LAYOUT

1/2" SOFT Balsa SH. OUTLINE

1/8" SHEET  
 OUTLINE

AXLE  $\ell$

REAR FRONT

FUSELAGE  $\ell$

LANDING GEAR  
 SUB WING  
 2 PCS. 5/16" SHEET

TRUE LENGTH FT.  
 TRUE LENGTH REAR

STRUTS MADE  
 FROM 1/8" PLY  
 ONE PIECE  
 RETAIN WITH 1/16"  
 SOFT SOLDER

1/16" SOFT SHEETING  
 SIMULATE RIBS WITH 1/16"  
 TAPE UNDER FABRIC

GRAIN

3/32" SHEET RIBS, SAND  
 TO SHAPE AFTER ASSEMBLY

CUTOUT BOTTOM SHEETING  
 FOR RUDDER PUSH ROD

NYLON HINGES

SCALE CONST. R/C CONST.

SCALE ELEVATOR HORN

LANDING & FLYING  
 WIRE RIGGING

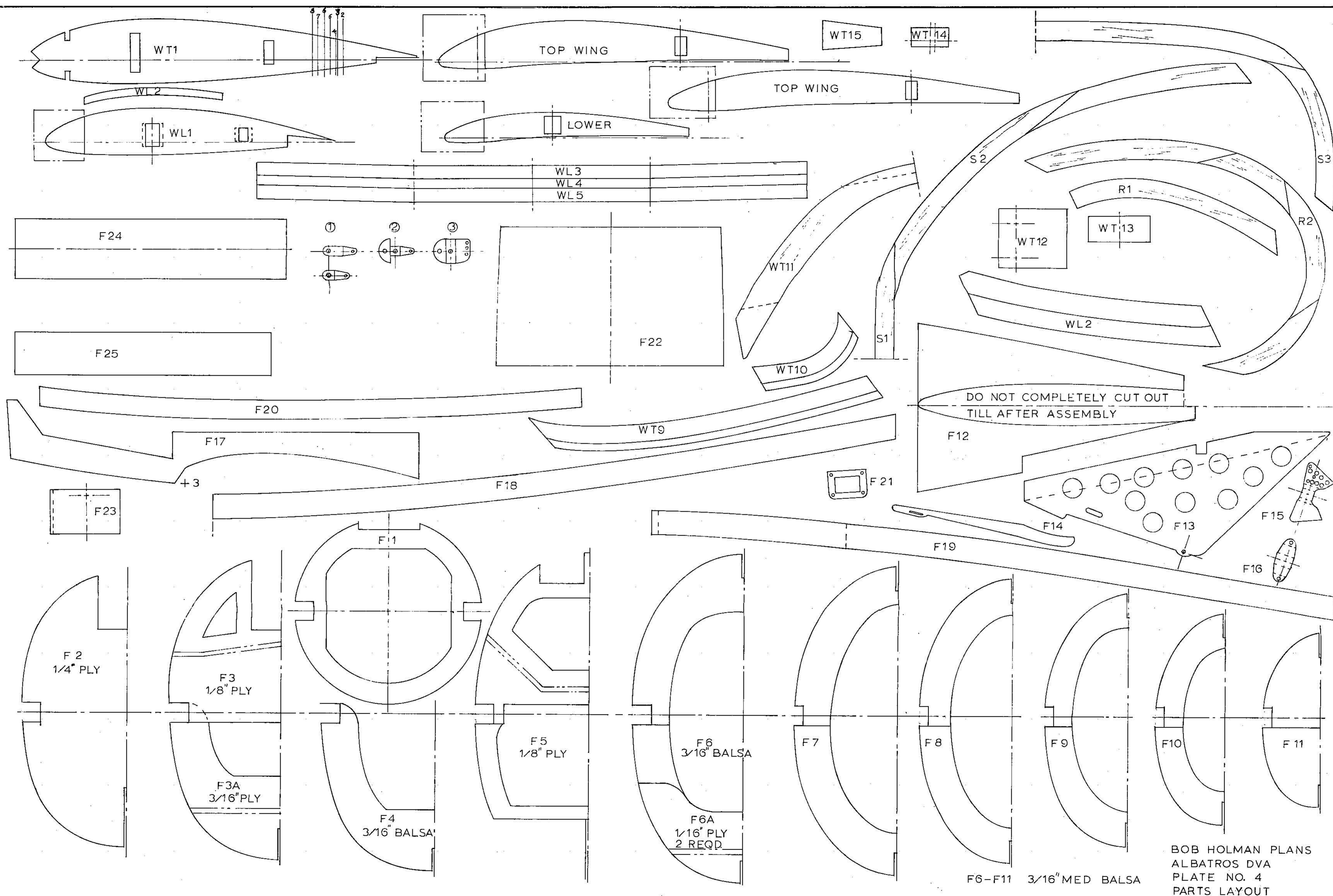
- ① 4 REQ.
- ② 4 REQ.
- ③ 2 REQ.
- 1/32" ALUM. FITTINGS

1/32" STEEL CABLES  
 REAR BAY ONLY  
 SIMULATE TURNBUCKEL  
 AT FUSELAGE ATTACHMENT  
 FITTING ONLY

"WILLIAM BROS"  
 SCALE WHEELS  
 USED ON PROTOTYPE

TRUE LENGTH  
 CABANE STRUTS

BOB HOLMAN PLANS  
 ALBATROS DVA  
 PLATE NO. 3



BOB HOLMAN PLANS  
ALBATROS DVA  
PLATE NO. 4  
PARTS LAYOUT

F6-F11 3/16" MED Balsa